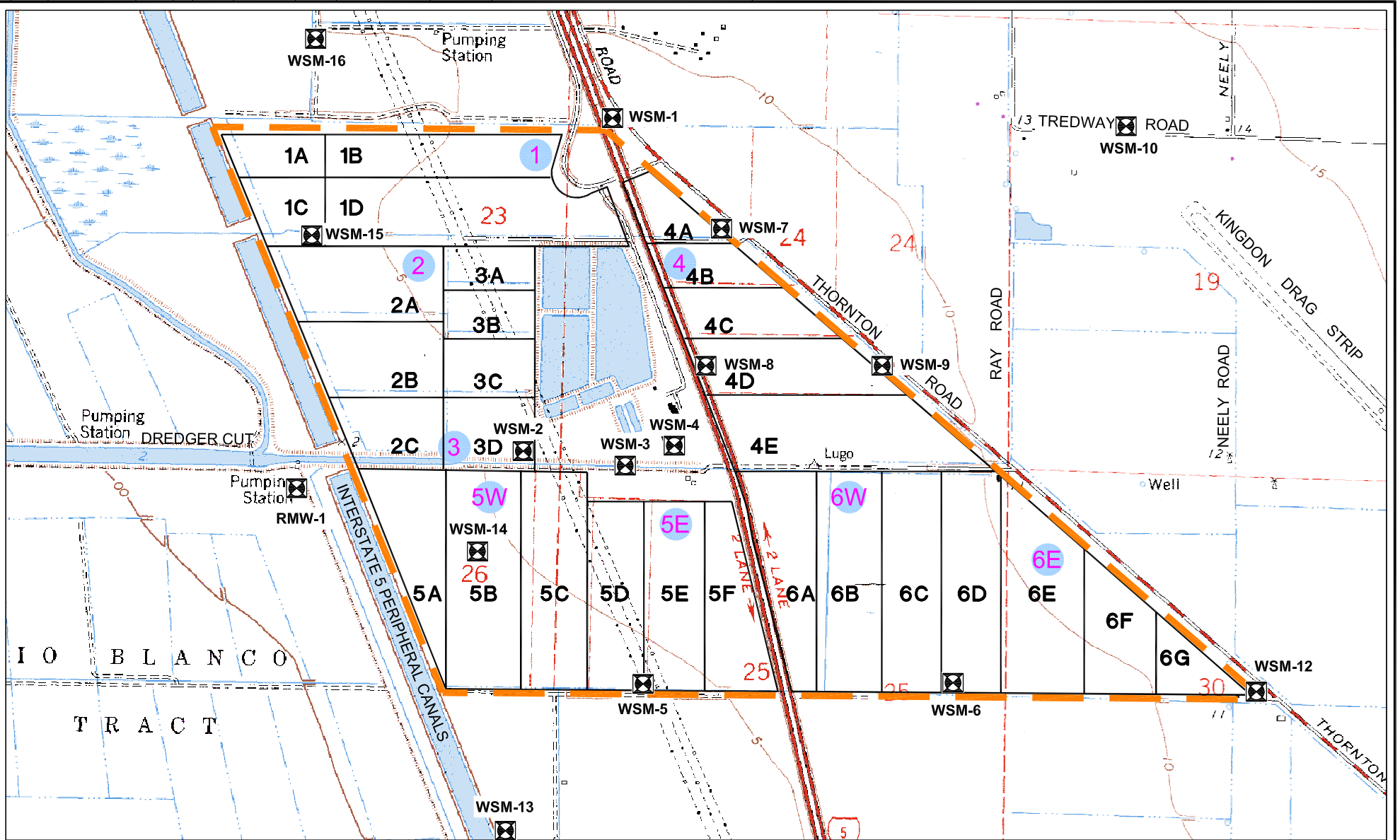





APPENDIX J

WPCF Soil Data Summary



LEGEND

-  BOUNDARY OF CITY-OWNED LAND
-  WSM-4 WELLS
-  MONITORING WELLS

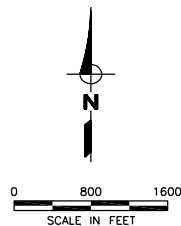
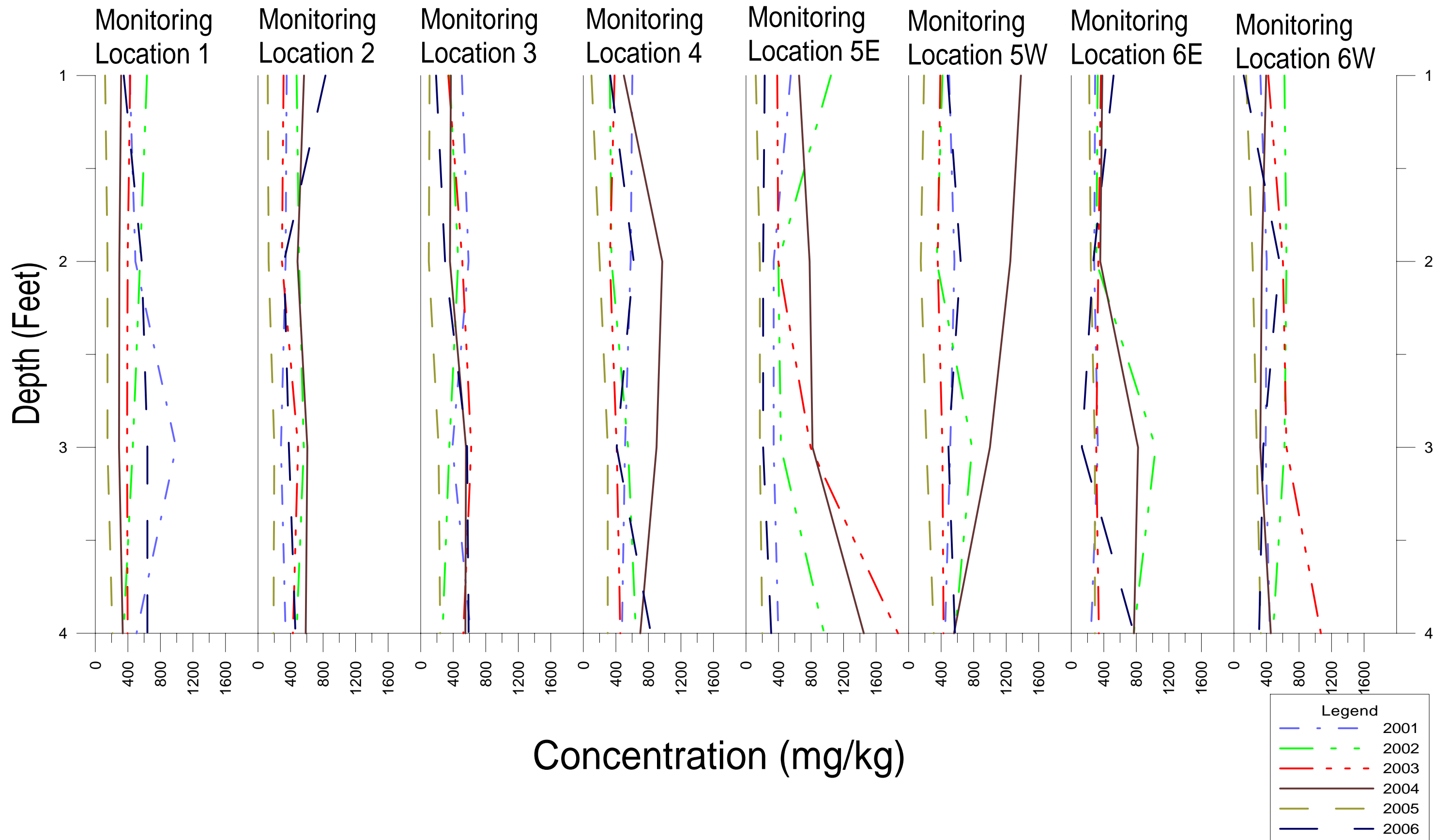
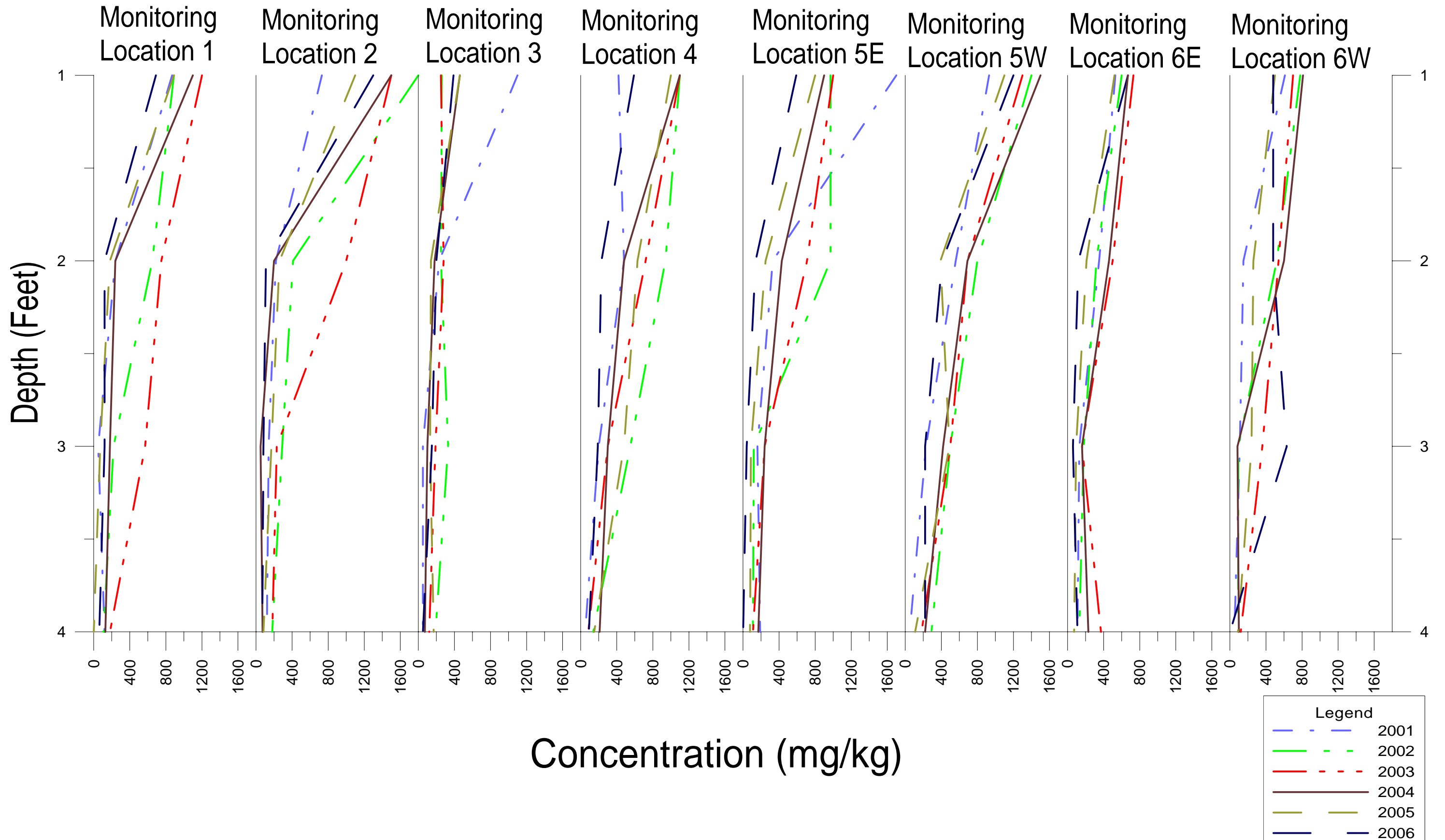


Figure 6-8
City of Lodi
Water Pollution Control Facility
Groundwater Assessment
SOIL MONITORING LOCATIONS

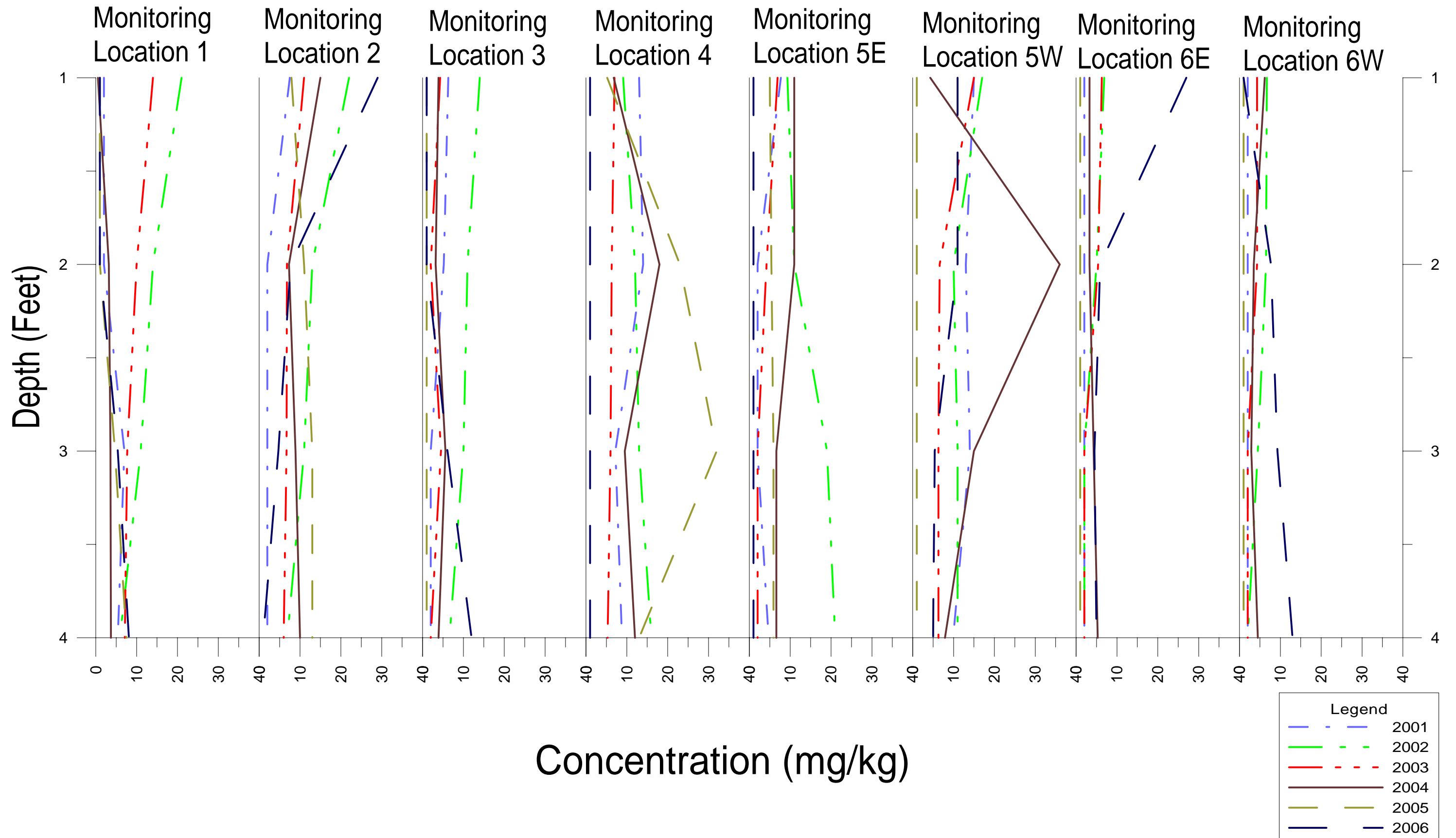
Depth Profiles of Total Soluble Salts 2001 through 2006



Depth Profiles of Total Kjeldahl Nitrogen 2001 through 2006



Depth Profiles of Nitrate as Nitrogen 2001 through 2006



Soil Properties from Agricultural Reuse Fields at the City of Lodi White Slough WPCF, June 2006

Field	Depth, in	pH	EC, μ mhos/cm	OM ^(a) , %	TKN, %	NO ₃ -N, ppm	Exch. NH ₄ ⁺ , ppm	P ^(b) ,ppm	ESP ^(c)
1A	0-12	8.3	680	1.6	0.09	13.8	4.2	65	5
	13-24	8.8	540	0.7	0.03	3.7	1.0	24	7
	25-36	8.8	560	0.6	0.02	4.6	0.03	17	6
	37-48	8.8	680	0.6	0.00	4.4	2.0	10	8
1D	0-12	6.2	580	2.4	0.13	37.2	3.3	120	5
	13-24	7.1	260	0.6	0.03	10.2	2.1	76	5
	25-36	7.3	340	0.4	0.01	15.4	1.9	46	6
	37-48	8.0	660	0.5	0.01	20.4	2.0	46	5
2B	0-12	8.0	820	3	0.07	11.3	4.9	35	2
	13-24	8.4	720	1.3	0.06	4.4	2.9	39	3
	25-36	8.4	720	0.8	0.01	3.6	2.1	16	4
	37-48	8.5	640	0.8	0.07	5.3	5	11	7
3B	0-12	7.2	640	1.6	0.10	4.4	21.1	53	5
	13-24	7.5	520	1.1	0.07	2.5	25.1	42	6
	25-36	8.4	800	0.8	0.03	2.1	6.5	45	10
	37-48	8.6	760	0.6	0.01	2.1	4.5	19	9
4A North	0-12	7.0	360	1.6	0.09	5.5	5.1	102	4
	13-24	7.4	200	0.6	0.03	3.7	4.1	36	4
	25-36	8.2	220	0.5	0.01	3.0	2.7	25	4
	37-48	8.4	380	0.5	0.01	1.6	2.6	28	4
4A South	0-12	6.7	680	2.0	0.13	31.1	3.9	120	3
	13-24	7.7	600	0.8	0.03	13.8	3.8	130	3
	25-36	8.1	500	0.6	0.02	7.9	3.3	86	4
	37-48	8.3	280	0.4	0.01	3.6	3.8	64	5
4C	0-12	7.2	400	2.0	0.10	9.0	4.1	113	3
	13-24	8.1	680	1.0	0.05	8.2	2.6	61	7
	25-36	8.3	1020	1.0	0.04	21.6	2.1	49	7
	37-48	8.2	1280	0.7	0.02	19.5	1.5	32	8
4E	0-12	7.9	400	1.3	0.07	5.3	1.3	61	3
	13-24	8.3	360	0.7	0.03	6.3	1.4	59	3
	25-36	8.1	320	0.6	0.02	3.8	2.1	39	4
	37-48	8.3	160	0.3	0.00	2.5	0.8	18	5
5A	0-12	8.0	580	2.1	0.08	7.9	5.8	105	3
	13-24	8.2	760	1.5	0.07	7.2	4.4	52	4
	25-36	8.4	800	1.0	0.02	3.4	3.7	35	5
	37-48	8.4	760	0.7	0.03	6.4	2.0	14	6
5C	0-12	8.1	460	1.6	0.08	12.5	3.2	40	2
	13-24	8.6	320	0.8	0.04	4.0	2.0	14	4
	25-36	8.7	460	0.7	0.02	4.2	1.9	9	7
	37-48	8.9	540	0.5	0.01	6.9	1.8	4	11
5F	0-12	8.0	520	1.4	0.06	33	3.7	40	3
	13-24	8.5	620	0.8	0.02	16	1.9	22	5
	25-36	8.7	460	0.7	0.02	6	1.7	13	6
	37-48	8.5	420	0.6	0.01	16	1.5	14	7
6A	0-12	7.5	600	1.5	0.08	5.9	8.4	31	4
	13-24	8.3	520	1.2	0.06	2.4	2.0	25	7
	25-36	8.6	660	0.8	0.02	1.8	1.1	12	11
	37-48	8.7	600	0.6	0.01	0.9	1.2	10	11
6C	0-12	8.0	420	1.3	0.07	7.8	3.0	30	2
	13-24	8.5	480	0.8	0.02	5.3	1.5	7	5
	25-36	8.6	460	0.7	0.03	4.2	7.8	6	6
	37-48	8.8	500	0.6	0.01	3.7	2.8	5	7
6F	0-12	8.0	480	1.3	0.05	16.4	3.1	59	2
	13-24	8.3	280	0.9	0.03	7.2	2.7	26	3
	25-36	8.4	560	0.8	0.02	9.7	2.8	35	3
	37-48	8.6	440	0.7	0.01	5.1	2.2	18	3
6G	0-12	8.0	560	1.5	0.05	17.3	3.8	6	3
	13-24	8.3	620	0.9	0.05	9.3	7.0	8	3
	25-36	8.5	680	0.9	0.02	9.2	3.9	11	3
	37-48	8.7	480	0.6	0.01	3.7	2.7	7	3

- (a). Loss-on-ignition soil organic matter test.
(b). Olsen's sodium bicarbonate phosphorus test.
(c). Exchangeable sodium percentage