



CITY OF LODI

COUNCIL COMMUNICATION

AGENDA TITLE: Presentation By The San Joaquin County Mosquito & Vector Control District Regarding Services, West Nile Virus, And Measure R

MEETING DATE: October 16, 2002

PREPARED BY: City Clerk

RECOMMENDED ACTION: None required.

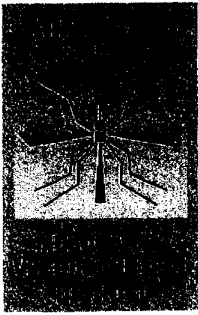
BACKGROUND INFORMATION: A representative from the San Joaquin County Mosquito & Vector Control District will be at the meeting to give a five-minute presentation regarding its services, the West Nile Virus, and Measure R.

FUNDING: None required.

Susan J. Blackston
City Clerk

SJB/jmp

APPROVED: _____
H. Dixon Flynn -- City Manager



September 12, 2002

JOHN R. STROH
MANAGER
BOARD OF TRUSTEES

CHESTER C. MILLER
PRESIDENT
TRACY

FRANK DEBENEDETTI
VICE PRESIDENT
SAN JOAQUIN COUNTY

GERALD M. SCHILBER
SECRETARY
ESCALON

JACK W. CORELL
SAN JOAQUIN COUNTY

DR. KENNETH ERWIN
MANTECA

ALLAN R. FETTERS
STOCKTON

JACK V. FIORI
LODI

GERARD FONDSE
RIPON

JEFF HIGHTOWER
LATHROP

ALVIN C. INMAN
SAN JOAQUIN COUNTY

MICHAEL MANNA
SAN JOAQUIN COUNTY

CHRISTOPHER K. ELEY
LEGAL ADVISOR

Ms. Jennifer Perrin
Lodi City Council
221 W. Pine St.
Lodi, CA 95240

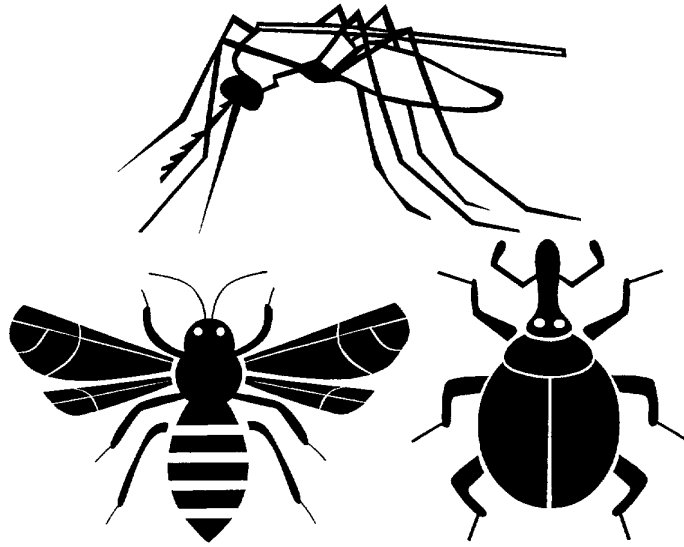
Dear Ms. Jennifer Perrin,

The San Joaquin County Mosquito & Vector Control District (District) would like to appear before the Council on October 16, 2002 to provide a short presentation regarding District services, West Nile Virus and Measure "R". The five-minute presentation will be given by either a staff member or a District Trustee.

If you would like additional information please call me at 368-5132.

Sincerely,


Aaron Devencenzi
Community Education Specialist



Measure “R”

A Special Tax for Vector and
Vector-borne Disease
Surveillance and Control

San Joaquin County
Mosquito & Vector Control
District

Background

1. San Joaquin County Mosquito and Vector Control District is a non-enterprise, independent special district, created in 1945 by the SJC Board of Supervisors and interested citizens who were concerned about pest and disease-carrying mosquitoes.
2. The district's service area is coterminous with San Joaquin County, and includes all seven incorporated cities.
3. An 11-member appointed board of trustees; one member from each incorporated city and four members from the county at large govern the district.
4. District employs 30 full time and 2 part time employees
5. Service is provided year round to both private and public lands, and to all residents and visitors. Services include:
 - Mosquito surveillance and control
 - Tick surveillance
 - Feral bee surveillance
 - Arbovirus surveillance
6. Funding is received through ad-valorem property taxes and an existing special tax:
 - Property tax rate of \$0.0007 on non-exempt real property value (as required by Proposition 13, 1978)
 - Special tax rate of \$0.0000034 to \$0.00029 per square foot of non-exempt real property (as required by Measure "A", 1981)
7. Fiscal year 2002-2003 operations budget of ≈\$3,417,000, with projected revenues of \$3,422,000.

Challenges

- Cost of providing service and maintaining programs is rising faster than revenues.
- Revenues are being diverted for other purposes.
 - Municipal redevelopment (x7)
 - ERAF
- Existing services need to keep pace with change:
 - Residential and commercial growth into rural areas, putting people closer to existing vector areas
 - Environmental expansion, i.e., wetland development, species habitat management, opens space
 - Outdoor recreational activities
 - Delta recreation (boating, picnicking, camping)
 - Youth sports (soccer, softball)
 - Municipal parks and outdoor facilities
 - Exotic vectors
 - Asian tiger mosquito, *Aedes albopictus*
 - AHB
 - Exotic diseases
 - West Nile Virus
 - Lyme
 - Demand for different types of service
 - Education, outreach (schools, fairs/festivals)
 - IPM (biological control, non-chemical)
 - Non-traditional pests (flies, rats, stinging insects)
 - Demand for higher level of service
 - 24-hour response; date and time sensitive
 - Lower tolerance for pest and vector populations

Actions to-date

- Worked within existing revenue structure for over 20 years, even with limits from redevelopment and ERAF.
- Kept workforce at post-Proposition 13 levels.
- Contracted with private sector for aerial application services.
- Reduced expenditures for equipment and vehicles by 40%.
- Self-insured with 35 other districts to reduce WC and GL expenses.
- Almost zero increase in infrastructure and facilities since 1980; only 1 project valued at ≈\$400,000 (1993).
- Negotiated labor contracts that include tied-benefits (new hires receive less benefits).
- Coordinate control programs with surrounding counties where practical (Contra Costa County on west side, Sacramento County on north side, and Stanislaus County on the south side).
- Worked with vector-producers to reduce where practical.

Tax proposal

1. Since the District services all land in San Joaquin County, and all residents and visitors receive the benefit of the service, it is felt that a per-parcel tax is the most equitable form of a proposed revenue increase.
2. The District's proposed tax recognizes that certain parcels of land are operated in a manner that produce vectors (thus requiring vector control), while certain parcels of land are operated in a manner that require the results of vector control.
3. The tax proposal requires a 2/3 (66.7%) majority-vote.
4. The maximum tax rate is \$3.89 per parcel per year, and is directly related to the cost of providing those services.
5. The proposed tax is projected to meet the funding needs of the District for the next 10 years, based on what we know today.
6. If the tax were applied at it's maximum rate, it would generate ≈\$694,000 for Fiscal Year 2003-2004.
7. The actual tax rate would be set annually by the Board of Trustees, and would be determined by the difference in proposed expenditures and the anticipated revenues.
8. The Board of Trustees is committed to responsible fiscal management of any new revenues.
9. The tax will allow for continued service at expected level(s), and will allow the District to expand surveillance and control for new and introduced vectors and their diseases.

RESOLUTION OF THE BOARD OF TRUSTEES
OF THE
SAN JOAQUIN COUNTY MOSQUITO & VECTOR CONTROL DISTRICT
CALLING FOR A SPECIAL TAX ELECTION AND
REQUESTING CONSOLIDATION WITH OTHER ELECTIONS

RESOLUTION 02/03-03

WHEREAS, the San Joaquin County Mosquito and Vector Control District is charged with the responsibility of protecting the health of residents and visitors of San Joaquin County by controlling mosquitoes and other vectors; and

WHEREAS, there has been a steady increase in costs to perform comprehensive vector and vectorborne disease surveillance and control due to several factors, including: 1) the introduction and spread of exotic vectors and vectorborne disease (e.g. the Asian tiger mosquito, *Aedes albopictus*; Africanized Honey Bees; West Nile virus), 2) compliance with complex environmental regulations (i.e., CEQA, NPDES), and 3) increased demand for services from a diverse and growing population; and

WHEREAS, the ability of the District to fund these services is constrained due to limitations on existing forms of revenue and the loss of over \$392,000 annually due to tax shifts authorized by the State government; and

WHEREAS, the District's Board of Trustees, who is charged with providing adequate revenue for the District to perform its mission of mosquito and vector control, believes it is necessary to provide for the additional revenues necessary to protect the health and safety of the residents and visitors of San Joaquin County; and

WHEREAS, this action is exempt from the provisions of the California Environmental Quality Act pursuant to Section 21080 (b)(8) of the California Public Resources Code; and

WHEREAS, in conformance with Section 50077 of the California Government Code, a public hearing were held June 18 and July 16, 2002 regarding the adoption of a special tax; and

WHEREAS, evidence was received and considered by the Board of Trustees as the legislative body of the San Joaquin County Mosquito and Vector Control District and there being no protest, either written or oral, against the proposed special tax, and after consideration of the same and the entire record the Board finds that a special tax not to exceed \$3.89 per non-exempt taxable parcel to be necessary.

NOW THEREFORE IT IS RESOLVED AND ORDERED AS FOLLOWS:

1. That the Board of Trustees does hereby call an election concerning the adoption of a special tax.
2. The full text of the measure to be presented to the voters shall read as follows:

"Shall a special tax for vector and vectorborne disease surveillance and control, not exceeding \$3.89 per year per non-exempt taxable parcel as set forth in Resolution 02/03-03 of the Board of Trustees of the San Joaquin County Mosquito and Vector Control District be adopted; Yes or No?"
3. The special tax shall be authorized upon approval of two-thirds of the votes cast by the registered voters casting ballots within the District.

4. The Board of Trustees of the San Joaquin County Mosquito and Vector Control District respectfully requests the Board of Supervisors of the County of San Joaquin to adopt a resolution on behalf of the San Joaquin County Mosquito and Vector Control District authorizing an election consolidated with the statewide election to be held on November 5, 2002 for the purpose of the residents of this Mosquito and Vector Control District to vote on a special tax for the purpose of vector and vectorborne disease surveillance and control.
5. All costs of conducting this election shall be the responsibility of the San Joaquin County Mosquito and Vector Control District.
6. The special tax may be collected at the same time and in the same manner as ordinary ad-valorem property taxes are collected, and shall be subject to the same penalties and the same procedure and sale in case of delinquencies as provided for ad-valorem property taxes. Per California Health and Safety Code, Section 2309, this tax shall be computed and entered on the County assessment-roll by the San Joaquin County Auditor-Controller and collected at the same time and in the same manner as other county taxes. When collected, the taxes shall be into the county treasury for the use of the San Joaquin County Mosquito and Vector Control District.
7. The adoption of this special tax shall have no affect on the special tax adopted by the voters of the District on November 3, 1981.
8. The Registrar of Voters of San Joaquin County is hereby requested to take all steps to call and hold the election in accordance with law to conduct the election on behalf of the District.
9. The County Counsel of the County of San Joaquin shall prepare an impartial analysis of the Measure.

IT IS FURTHER ORDERED that the manager of the District forward a copy of this Resolution to the Board of Supervisors of San Joaquin County together with a letter requesting said Board to institute the necessary proceeding to consolidate this election with any other election to be held in San Joaquin County on November 5, 2002.

Passed and adopted this 29th day of July, 2002 by vote of the Board of Trustees.

BOARD OF TRUSTEES

San Joaquin County Mosquito and Vector Control District

AYES 9
NOES 1
ABSENT 1
ABSTAIN 0

SIGNED: Chet Miller
CHET MILLER
PRESIDENT

ATTEST: Gerald Schilber
GERALD SCHILBER, SECRETARY

DATE: 7/29/02

JD 7/29/02

RECEIVED
02 JUL 30 AM 11:15
REGISTRAR OF VOTERS

TAX RATE STATEMENT

San Joaquin County Mosquito & Vector Control District

An election ~~will be held~~ in the San Joaquin County Mosquito and Vector Control District (the "District") on November 5, 2002 to authorize a special tax to provide for vector and vectorborne disease surveillance and control. If the special tax is approved, the District expects to implement the maximum tax rate over time.

The best estimate of the tax, which would be required to be levied to fund the services of vector and vectorborne disease surveillance and control during the first fiscal year after the adoption of the tax, based on estimated number of non-exempt taxable parcels available at the time of filing of this statement, is \$3.83 per non-exempt taxable parcel in fiscal year 2003-04.

The highest tax, which would be required to be levied to fund the services of vector and vectorborne disease surveillance and control after the adoption of the tax, based on estimated number of non-exempt taxable parcels available at the time of filing this statement, is \$3.89 per non-exempt taxable parcel.

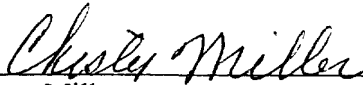
Voters should note that the estimated and maximum tax rate is based on a *per parcel* basis for all non-exempt taxable parcels as shown on the County's official tax rolls, not on the property's use or value.

The actual tax rates and the years in which they will apply will be based on the amount of revenue projected and the expenditure budget as adopted by the District's Board of Trustees for each fiscal year.

Dated: July 29, 2002



John R. Stroh
Manager
San Joaquin County Mosquito & Vector Control District



Chester Miller
President, Board of Trustees
San Joaquin County Mosquito & Vector Control District

 7/29/02

ARGUMENT IN FAVOR OF MEASURE "R"


San Joaquin County Mosquito and Vector Control District provides comprehensive mosquito and vector control services to all residents and visitors of San Joaquin County. The District was formed in 1945 at the request of homeowners and farmers who were impacted by hordes of disease carrying and pest mosquitoes. Before the creation of the district, families were forced into their homes at dusk, and farm workers refused to enter fields to harvest crops. Outdoor recreational activities were restricted in many areas, prompting business owners and civic leaders to push for a comprehensive mosquito control program. Between 1945 and 1984, over 100 cases of encephalitis were reported in San Joaquin County. Since this time, the District increased the level of vector surveillance and control, and even though certain diseases are detected, there have been no human cases of mosquito-borne disease in over 25 years. The District's comprehensive surveillance program, coupled with environmentally sound control techniques, keeps diseases such as malaria and encephalitis from affecting the public's health and quality of life.

The District is currently confronted with several new challenges, including the emergence of new vector-borne diseases such as mosquito-transmitted West Nile Virus, and the introduction of exotic vectors such as the Asian tiger mosquito. To maintain existing programs and respond to the introduction of new vectors and their diseases, the District is proposing a special tax of \$3.89 per taxable parcel.

As San Joaquin County's population grows, and commerce, real estate and recreational activities expand, a comprehensive vector control program is paramount for the health and comfort of our residents and visitors.

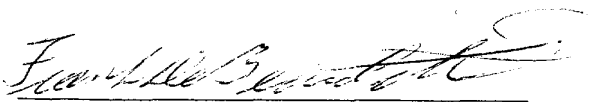
On behalf of your local mosquito and vector control district, we urge you to vote **yes** on **Measure R**.


Chet Miller, Trustee, City of Tracy


Dr. Ken Erwin, Trustee, City of Manteca


Allan Fettes, Trustee, City of Stockton


Gerard Fondse, Trustee, City of Ripon


Frank DeBenedetti, Trustee, San Joaquin County

August 15, 2002

BEFORE THE BOARD OF SUPERVISORS OF THE COUNTY OF SAN JOAQUIN
STATE OF CALIFORNIA

R-02- 548

RESOLUTION CALLING FOR A SPECIAL TAX ELECTION
FOR THE SAN JOAQUIN COUNTY MOSQUITO & VECTOR CONTROL DISTRICT
AND TO CONSOLIDATE SAID ELECTION WITH THE
STATE OF CALIFORNIA GENERAL ELECTION TO BE HELD
ON TUESDAY, NOVEMBER 5, 2002

-o0o-

WHEREAS, the Board of Trustees of the San Joaquin County Mosquito & Vector Control District has called for a Special Tax District Election to be held on Tuesday, November 5, 2002 for the purpose of submitting on the ballot the following measure:

Measure R: "Shall a special tax for vector and vectorborne disease surveillance and control, not exceeding \$3.89 per year per non-exempt taxable parcel as set forth in Resolution 02/03-03 of the Board of Trustees of the San Joaquin County Mosquito and Vector Control District be adopted?"

Yes

No

WHEREAS, the Board of Trustees of the San Joaquin County Mosquito & Vector Control District has also requested that said election be consolidated with the State of California General Election to be held on Tuesday, November 5, 2002; and,

WHEREAS, all costs of conducting the election shall be the responsibility of the district.

RECEIVED
02 AUG 21 AM 11:27
REGISTRAR OF VOTERS
DEPUTY

NOW, THEREFORE, BE IT RESOLVED that this Board of Supervisors does authorize the Registrar of Voters to conduct the Special Tax Election for the San Joaquin County Mosquito & Vector Control District, and to consolidate said election with the State of California General Election to be held on November 5, 2002.

PASSED AND ADOPTED this 20th day of August 2002 by the following vote of the Board of Supervisors, to wit:

AYES: BEDFORD, SIEGLOCK, GUTIERREZ, MARENCO, MOW

NOES: NONE

ABSENT: NONE

VICTOR MOW

VICTOR MOW, Chairman
Board of Supervisors
County of San Joaquin
State of California

ATTEST: LOIS M. SAHYOUN
Clerk of the Board of Supervisors
County of San Joaquin
State of California

By: AIDA PIZANO
Deputy Clerk



REVIEWED BY:

TERRENCE R. DERMODY
County Counsel

By: Carol Boardman
CAROL BOARDMAN
Deputy County Counsel

Res.SJ Co. Mosquito & Vector Control District.

Distribution:

COB: Original

Reg. Of Voters 4

THE FOREGOING IS A CORRECT COPY
OF THE ORIGINAL ON FILE IN THIS OFFICE.

ATTEST 8/20 2002
Clerk of the Board of Supervisors
of the County of San Joaquin,
State of California
By: [Signature] Deputy