

MA 1322 2490217

HARROLD

18809 Harrod

27442 HUW120

19.13

24902009

9.70

L401162

27512 Vine

Dunson

19.50

19685

19685 Harrod

40.22

24911014

27434

9.61

24902010

249011642

9.75

27412 Vine

24911048

27348

2.55

24902014

24902013

24911644

4.03

27111.87

27344

4.88

24911013

40.

19866 Santa Fe

22.34

27202

24911003

4.90

27189

27222

4.88

24911010

22.59

27052

Raddax

22737017

9.40

27093

27032

9.14

24911068

22736000

1238

19468 Santa Fe

26731 Vine

13.28

22736009

22736011

20.

Santa Fe  
19322

221

26848

13.46

22737006

26700

2307 Jackson

3.71

2505 Jackson

7.57

PLANNING

26684

1.01

22736013  
Santa Fe  
19152

4.07

5.3

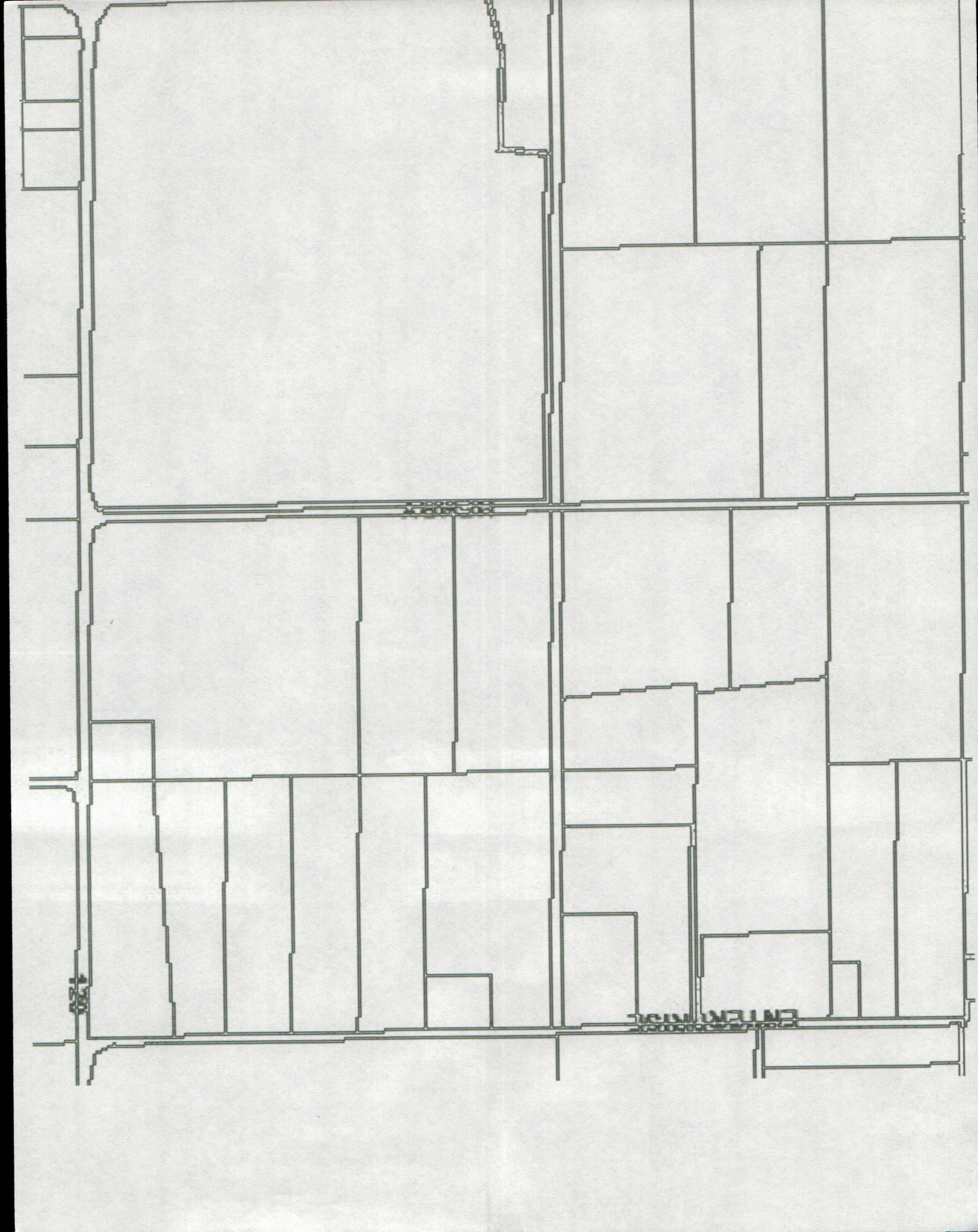
19176

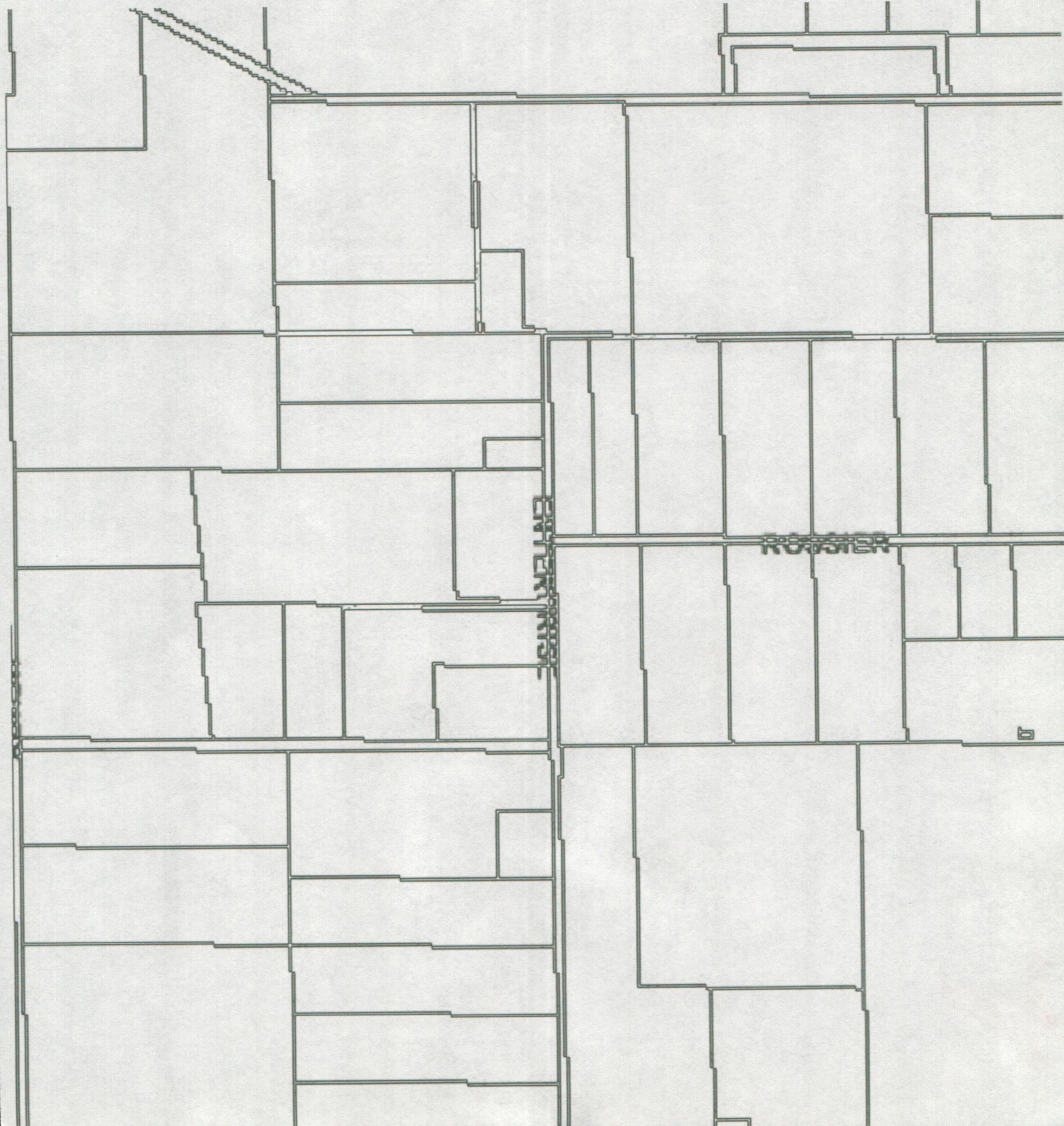


WALKWAY

ROOSTER

6

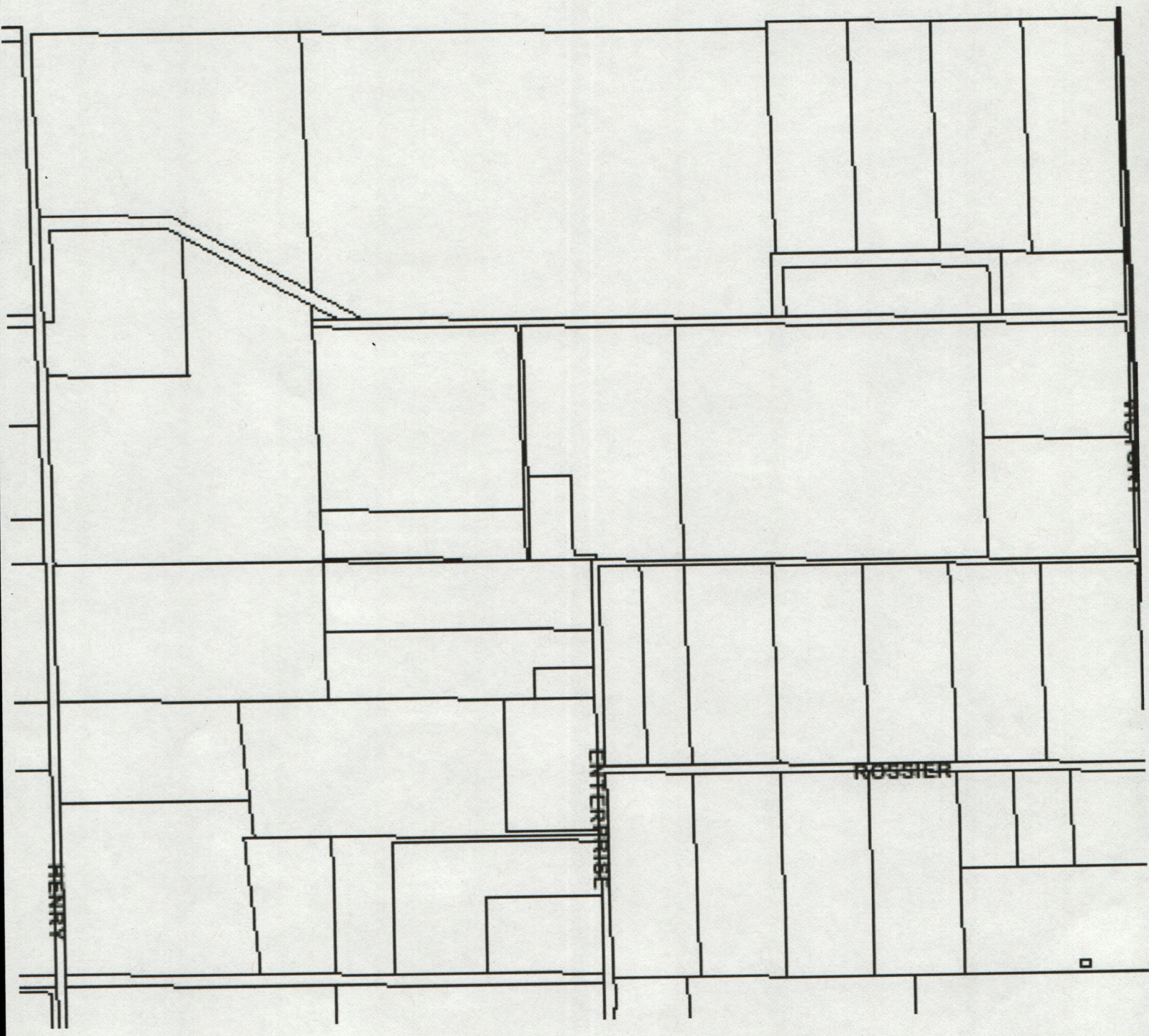




STAIRS  
ELEVATOR

ROOSTER

6



HENRY

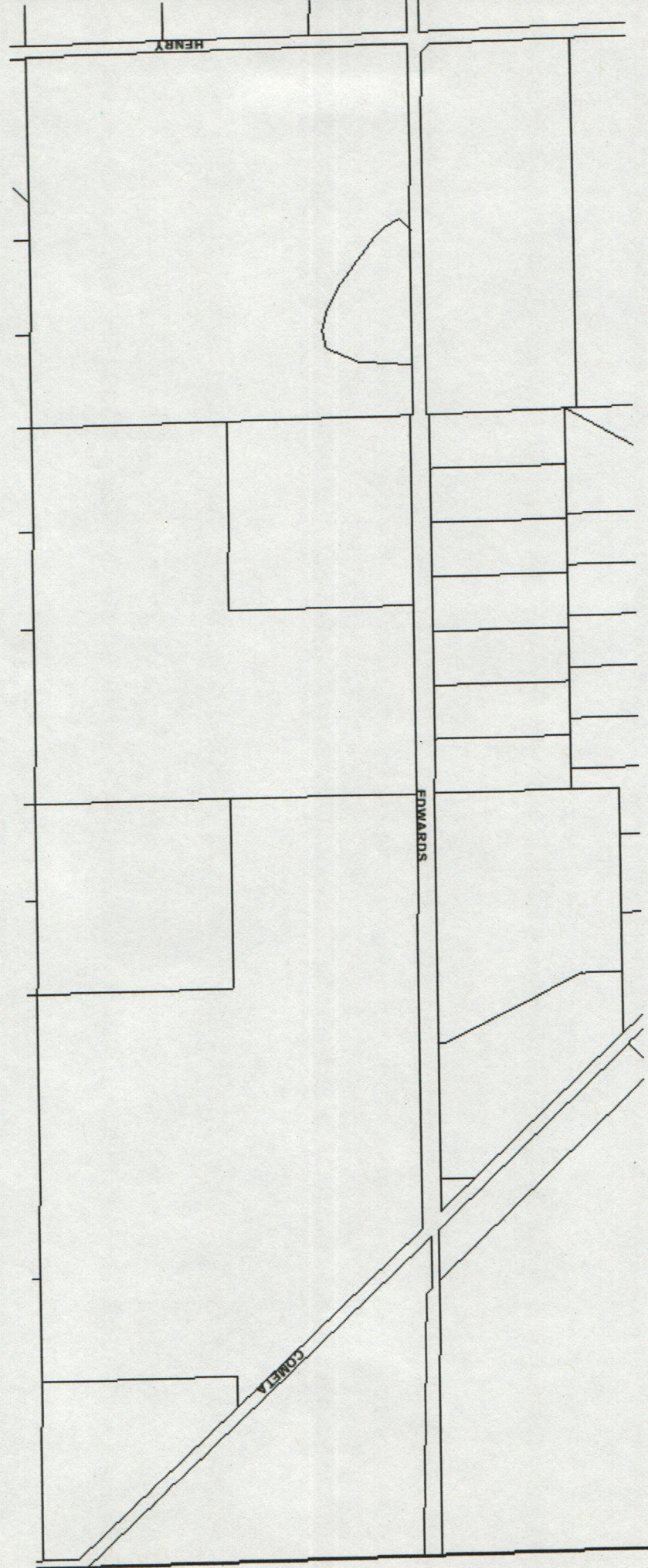
ENTERPRISE

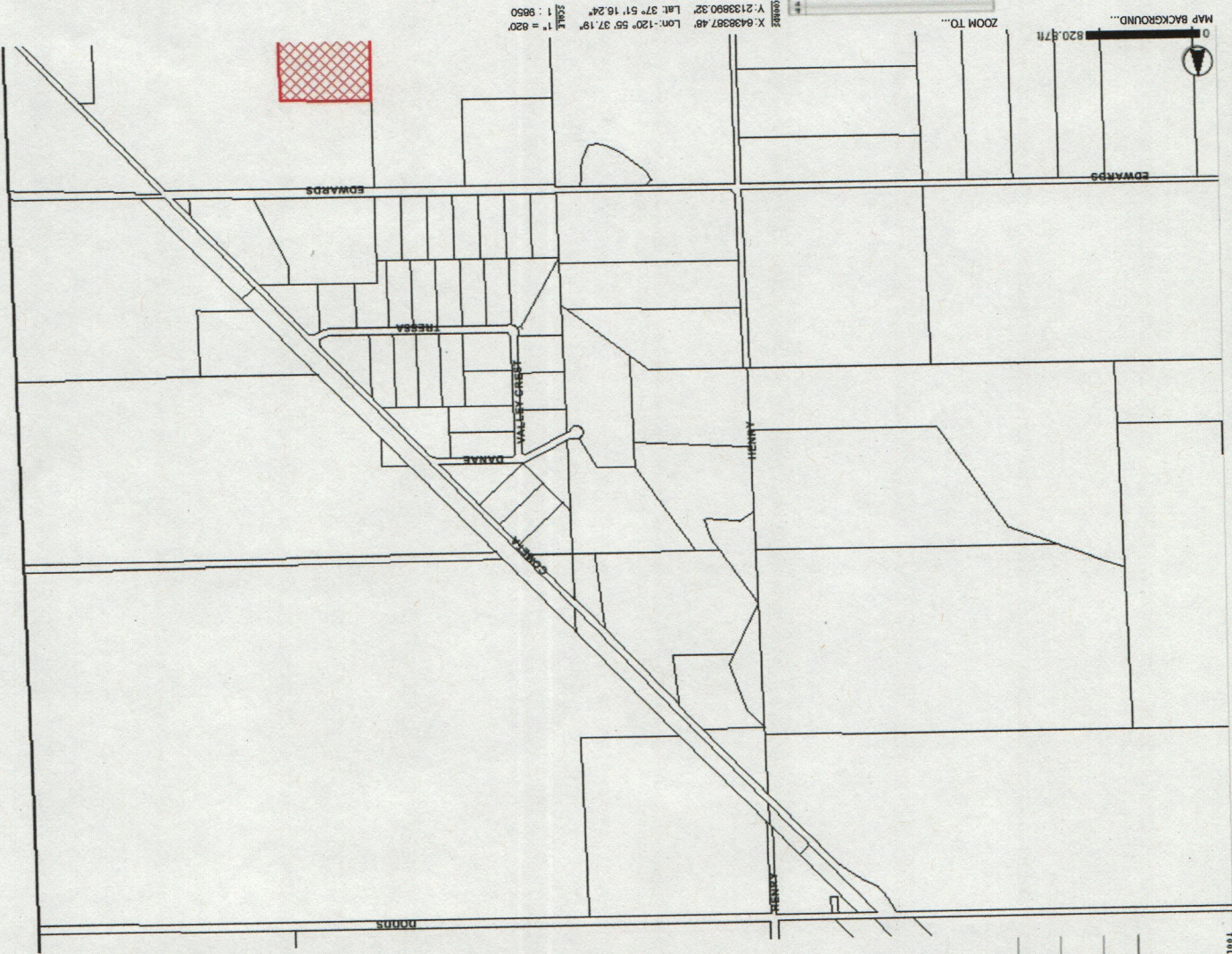
ROSSIER

PORTANT

□







MAP BACKGROUND... 820.87ft  
ZOOM TO...  
Coordinates: X: 643837.48, Y: 2133890.32, Lat: 37° 51' 16.24", Lon: -120° 56' 37.19"  
Scale: 1" = 820 feet

- Parcel ID
- Status Number
- Status Street
- Status Type
- Status City
- Parcel Sqft
- Parcel Acres
- WA Contract
- WA Acres
- WA Renewal
- WA Category
- City
- PlanningArea
- GPCommunityNam
- GPCommunityTyp
- GenPlan
- Zoning
- SuperiorDist
- SphereInfluenc
- HuntAdvisoryCou
- EnterpriseZone
- HighSchoolDist
- ElementSchoolDist
- FreDistrict
- FireService
- JudicialDistrict
- FireHazardArea
- SubsidiveExpansh
- SJAFCA
- AirportAOT
- ServicesWater
- ServicesStorm
- IrrigationDist
- RedevelopmentDist
- PhoneService
- AgriculturalPreser
- TractBlkgp
- TrafficZone
- SheriffBeat
- SheriffRD
- ZipCode
- PostOffice
- MtnHouseGeodist
- MtnHouseGeodist
- NoiseContour
- GIS\_APN



30282

Wagon

29411

29527

29745

29929

30103

30295

30303

24912044

15.4

4.92

4.92

2.25

19789

19785

19753

1.34

1.29

24912022

24912045

24912027

24912021

24912046

24912034

24912049

24912028

24912023

24912030

24912008

24912034

24912002

24912008

24912002

24912008

24912002

24912008

24912002

24912008

24912002

24912008

24912002

24912008

24912002

24912008

24912002

24912008

24912002

24912008

4.52

5.05

24912046

24912034

24912049

24912028

24912023

24912030

24912008

24912034

24912002

24912008

24912002

24912008

24912002

24912008

24912002

24912008

24912002

24912008

24912002

24912008

24912002

24912008

24912002

24912008

9.50

24912043

54+1 ft

Südher

24912006

19.85

10.2

10.

10

10.06

3.

24912034

24912012

28.48

24912035

19441 Suttiff

N

30098 V.M.W.

29980

29582

29734

29702

29440

29568



3

18708 S+L+FF

26.85

22926025

30962 Hwy 20

68.91

22919006

31062 Hwy 20

33.36 AC

22919005

18954 S+L+FF

115.28

24913001

24913002

752

24914008  
1.33

13.33

24914028

24914020

24914021

24914022

24914013

24914012

24914016

24914025

24914010  
24914011  
24914012

S+L+FF

24914008  
2.12  
19376

24914006

24914025

10.02

9.85

9.85

9.85

9.66

10.

10.

10

5.6

24914007  
3.56  
19472

30573

24914024  
2.08

30657

30873

30837

30953

31053

31141

31261

31345

31399

6.26

4811294

COMBS

S

24914014

LINE

Hwy

N

120

WILSON

752

W

N1

WOWR7

29094 E. Lemon

30282

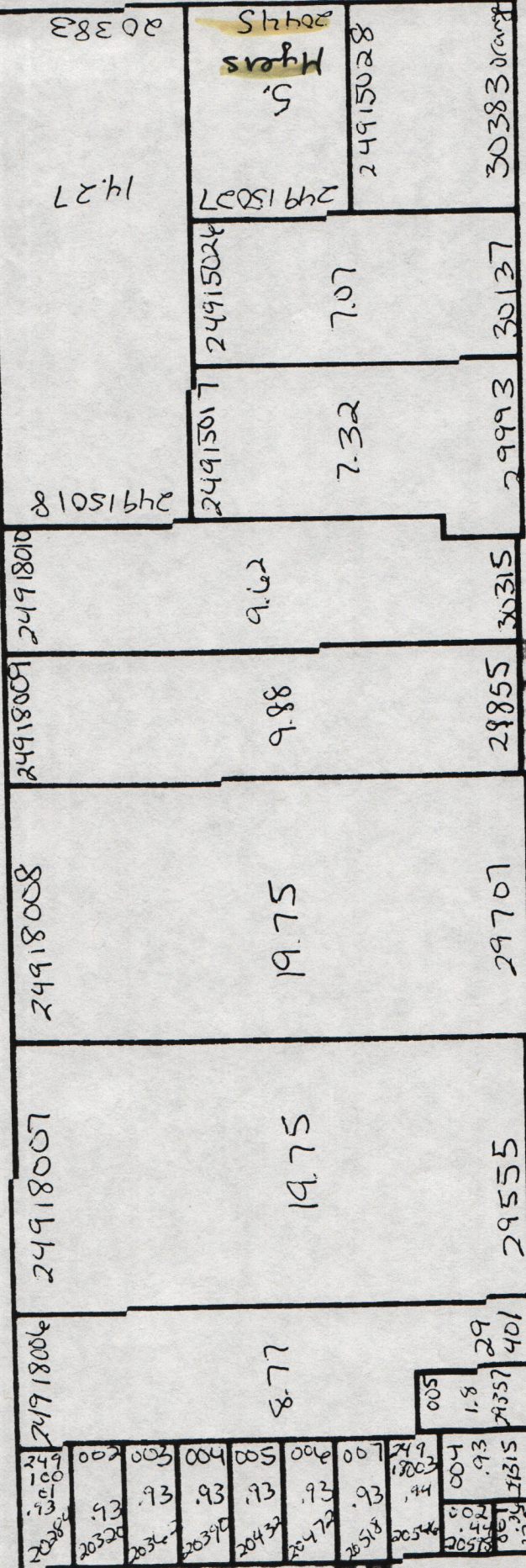
5.70

24912027

Webster  
20011  
24912033

128.55

24912032



ORANGE

Henry

S

E

SEIDER

20267

20399

19200

3

20027

1

29027

20357  
20356  
20355  
20354  
20353  
20352  
20351  
20350  
20349  
20348  
20347  
20346  
20345  
20344  
20343  
20342  
20341  
20340  
20339  
20338  
20337  
20336  
20335  
20334  
20333  
20332  
20331  
20330  
20329  
20328  
20327  
20326  
20325  
20324  
20323  
20322  
20321  
20320  
20319  
20318  
20317  
20316  
20315  
20314  
20313  
20312  
20311  
20310  
20309  
20308  
20307  
20306  
20305  
20304  
20303  
20302  
20301  
20300  
20299  
20298  
20297  
20296  
20295  
20294  
20293  
20292  
20291  
20290  
20289  
20288  
20287  
20286  
20285  
20284  
20283  
20282  
20281  
20280  
20279  
20278  
20277  
20276  
20275  
20274  
20273  
20272  
20271  
20270  
20269  
20268  
20267  
20266  
20265  
20264  
20263  
20262  
20261  
20260  
20259  
20258  
20257  
20256  
20255  
20254  
20253  
20252  
20251  
20250  
20249  
20248  
20247  
20246  
20245  
20244  
20243  
20242  
20241  
20240  
20239  
20238  
20237  
20236  
20235  
20234  
20233  
20232  
20231  
20230  
20229  
20228  
20227  
20226  
20225  
20224  
20223  
20222  
20221  
20220  
20219  
20218  
20217  
20216  
20215  
20214  
20213  
20212  
20211  
20210  
20209  
20208  
20207  
20206  
20205  
20204  
20203  
20202  
20201  
20200  
20199  
20198  
20197  
20196  
20195  
20194  
20193  
20192  
20191  
20190  
20189  
20188  
20187  
20186  
20185  
20184  
20183  
20182  
20181  
20180  
20179  
20178  
20177  
20176  
20175  
20174  
20173  
20172  
20171  
20170  
20169  
20168  
20167  
20166  
20165  
20164  
20163  
20162  
20161  
20160  
20159  
20158  
20157  
20156  
20155  
20154  
20153  
20152  
20151  
20150  
20149  
20148  
20147  
20146  
20145  
20144  
20143  
20142  
20141  
20140  
20139  
20138  
20137  
20136  
20135  
20134  
20133  
20132  
20131  
20130  
20129  
20128  
20127  
20126  
20125  
20124  
20123  
20122  
20121  
20120  
20119  
20118  
20117  
20116  
20115  
20114  
20113  
20112  
20111  
20110  
20109  
20108  
20107  
20106  
20105  
20104  
20103  
20102  
20101  
20100  
20099  
20098  
20097  
20096  
20095  
20094  
20093  
20092  
20091  
20090  
20089  
20088  
20087  
20086  
20085  
20084  
20083  
20082  
20081  
20080  
20079  
20078  
20077  
20076  
20075  
20074  
20073  
20072  
20071  
20070  
20069  
20068  
20067  
20066  
20065  
20064  
20063  
20062  
20061  
20060  
20059  
20058  
20057  
20056  
20055  
20054  
20053  
20052  
20051  
20050  
20049  
20048  
20047  
20046  
20045  
20044  
20043  
20042  
20041  
20040  
20039  
20038  
20037  
20036  
20035  
20034  
20033  
20032  
20031  
20030  
20029  
20028  
20027  
20026  
20025  
20024  
20023  
20022  
20021  
20020  
20019  
20018  
20017  
20016  
20015  
20014  
20013  
20012  
20011  
20010  
20009  
20008  
20007  
20006  
20005  
20004  
20003  
20002  
20001  
20000







DOVE

COMETA

EDWARDS

SORRENTI

TIFFANI

STEINEGUL

GROOMS

BUERER

DUTRA

MAGNOLIA

HENRY

VICTORY

KELLY

MAHON

A

B15

B15

A

STANISLAUS

CAMPBELL

OWENS

SEIDNER

ENTERPRISE

B15

JACKSON

120

C

ENRSP

VINE

HARROLD

D

C

VINE

D

ST JOHN

I

HARROLD

LEMON

SUTLIFF

COMBS

JONES

SANTAFE

IA

ORANGE

RIVER

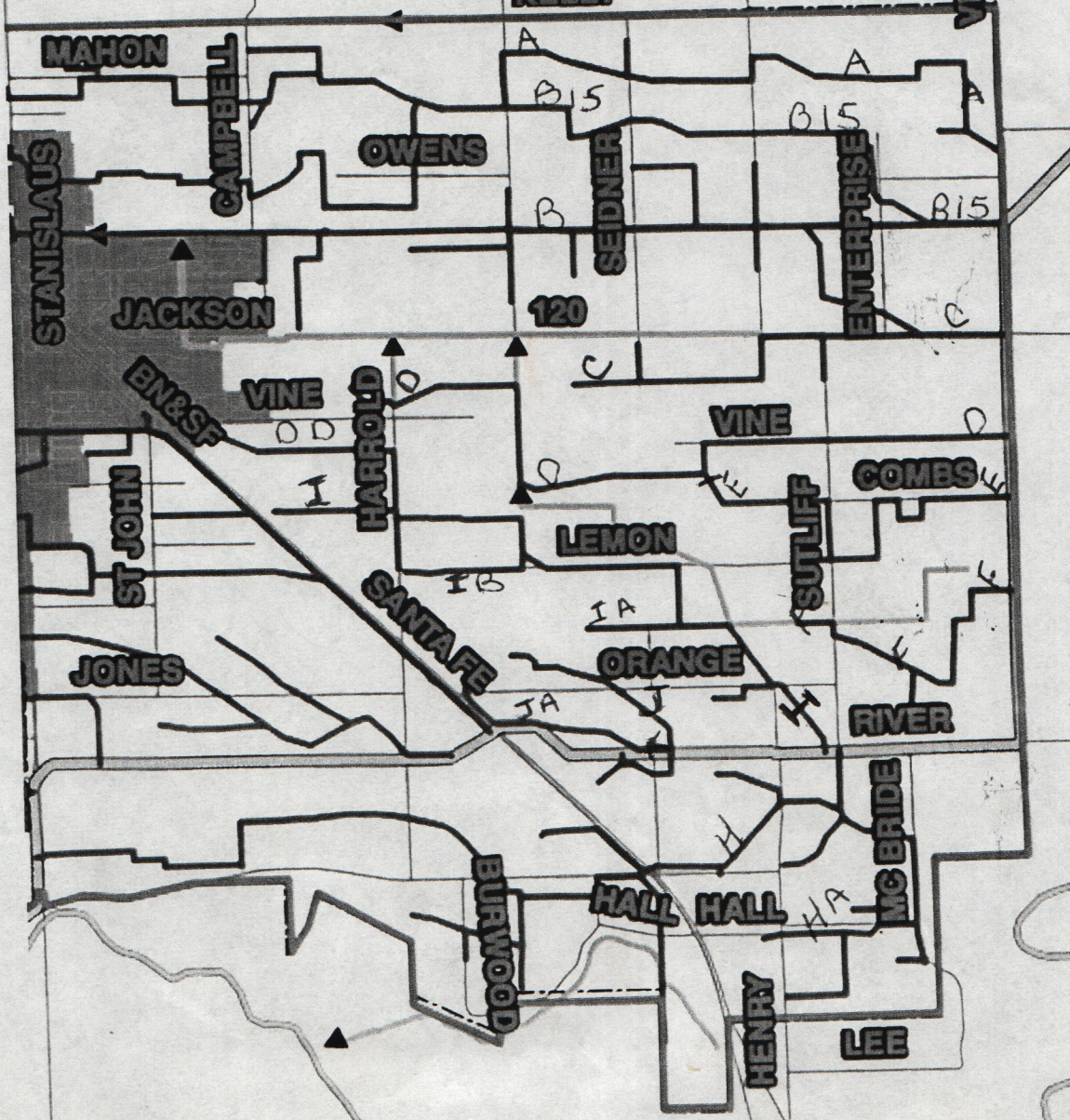
BURWOOD

HALL HALL

MC BRIDE

HENRY

LEE





18785 sub 1-ff

farmed by  
Van Vliet

003  
39.10

24912005

29984

22925024

28.20

S

PINE

29462

22925040

9.5

29924

22925039  
2.95

29912

22925038  
2.87

29832

22925037

19.59

40021642

15.85

29578

DCI MAIL

Valerie  
Watts  
4/27/09  
2.5 AP  
John  
Edwards  
DAP

N

24912003

10.07

29393

24912002

10.07

18778

22925034

5.85

18672

22925036

6.79

18624

22925037

2.03

22925038

1.02

22925039

2.05

22925040

1.17

22925041

1.88

Lizendale  
NA

HEIDNER

VICTORY

31268

24915005  
53.52 AC  
Arlin

24915006  
26.72

31439 River

24915042  
24.54  
011

249  
15043  
5.

31417

30962

24915004  
60.02 AC  
McCurly

24915035  
40.52

24915035  
1913

31097

COMBS

30836

30.01

24915003  
24915002

24915010  
010051642

40.52

24915011  
110051642

20.

30783

30749

30708

30.01

60.02 AC

003

018

24915037

27.10

24915038  
3.

043

24915040  
22.55

249  
150  
41

1.2  
54

30503

19774 Suttiff

Fennelli

20300

24915031  
1.90

20744  
Tammie  
3.94

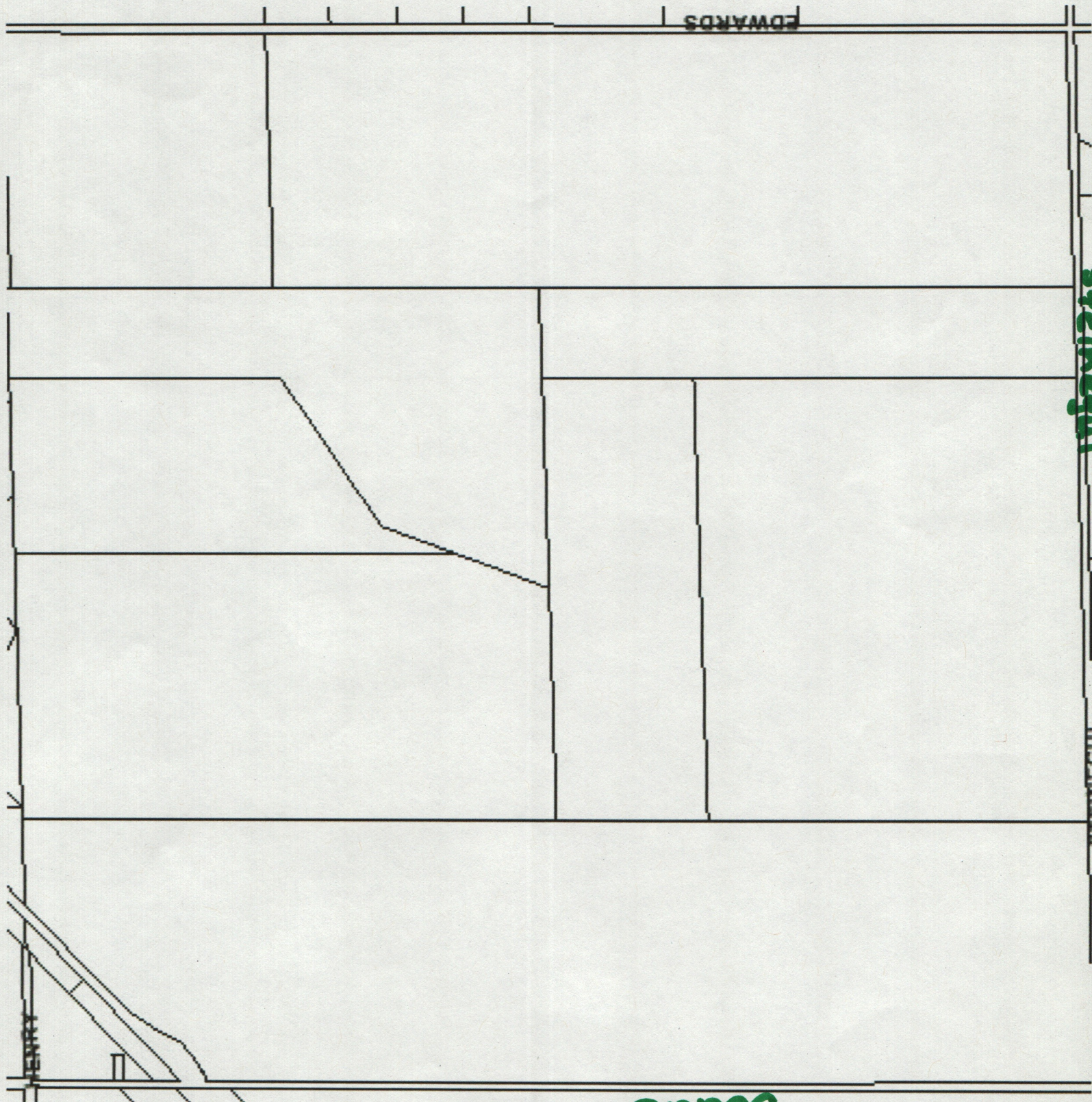
20720  
20750

SUTTIF



EDWARDS

ST. AUGUSTINE



DODDS

S

EDWARDS

TRESSA

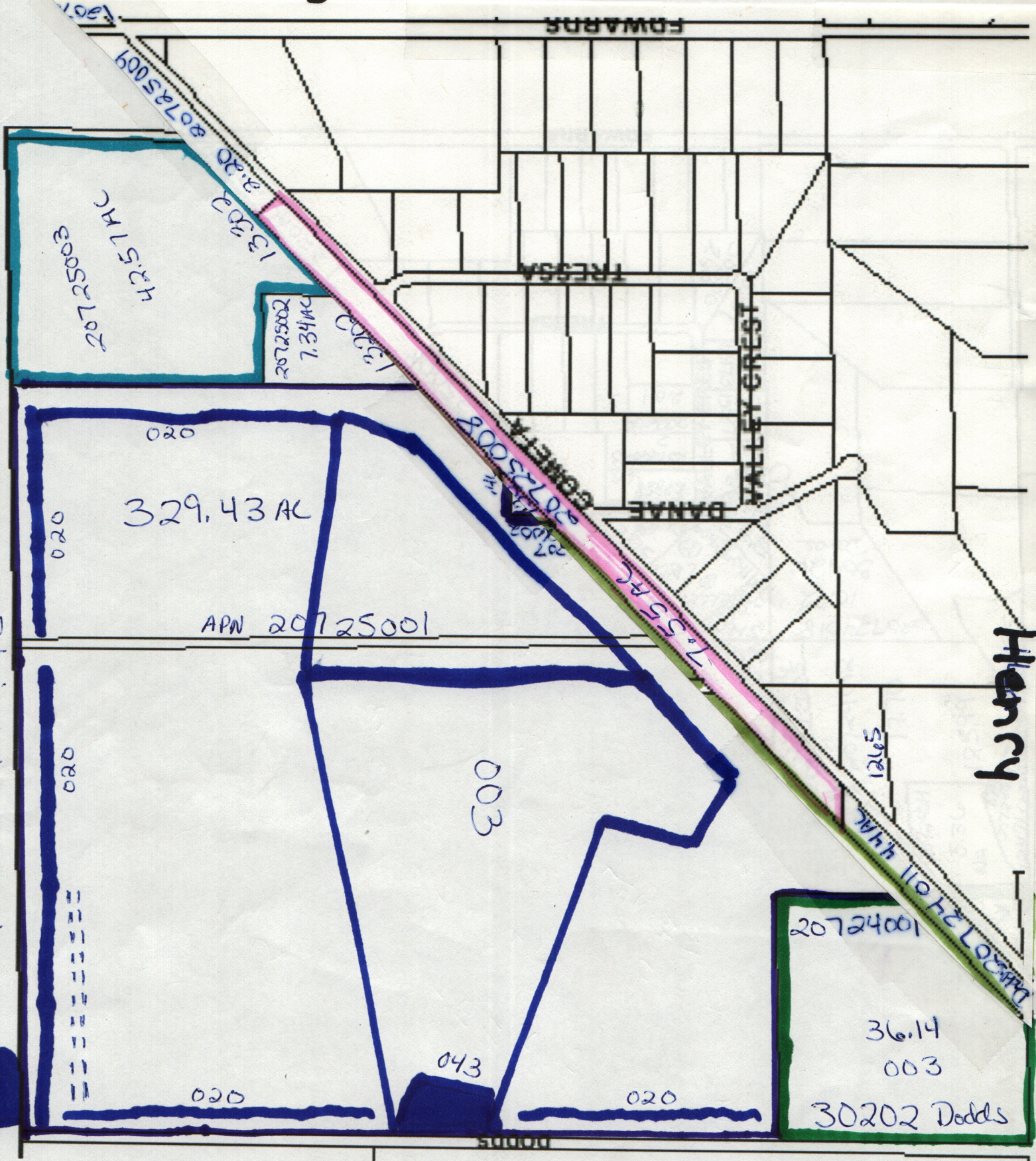
VALLEY CREST

DANAE

EGMETHA

Henry

Stain Islands County



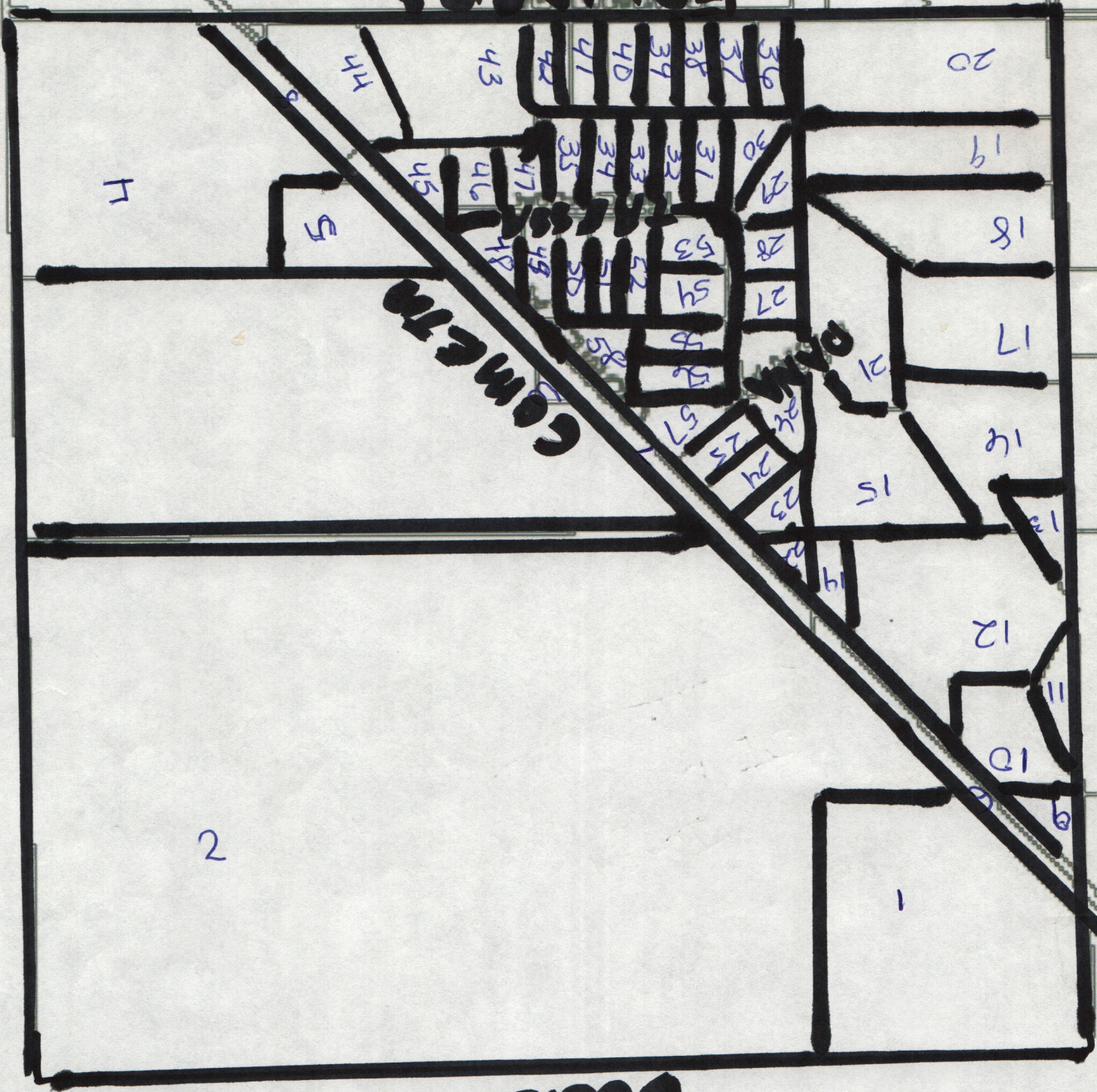
50000

N



199813

Dodds



2

1

H

5

20

19

18

17

16

15

12

10

9

36  
37  
38  
39  
40  
41  
42  
43

30  
31  
32  
33  
34  
35

29  
28  
27  
26  
25  
24  
23  
22  
21

53  
54  
55  
56  
57  
58

47  
48  
49  
50  
51  
52

45  
46  
47  
48  
49  
50

74





NR 1322 24902017

HARROLD

18809 Harrold

970

24911047

27512 Vine

19.50

24911048

19685

40.22

24911014

19685 Harrold

2764241120

19.13

24902009

27434

9.61

24902010

9.75

27412 Vine

27348

2.55

24902014

24902013

4.05

27412 Vine

27344

4.88

24911011

40.

24911013

19866 Santa Fe

27202

23.34

24911003

4.90

27112 Vine

27222

4.88

24911010

27052

22.59

24911002

9.40

27093

27032

9.14

24911068

2273000

1238

19468 Santa Fe

26731 Vine

13.28

22736009

22736011

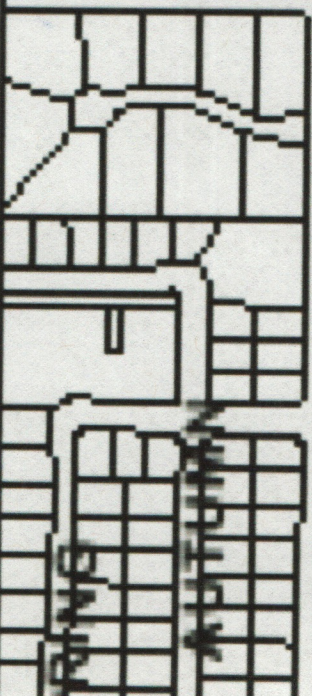
20.

19322 Santa Fe

26848

13.46

22737006



2273003

4.07

19152 Santa Fe

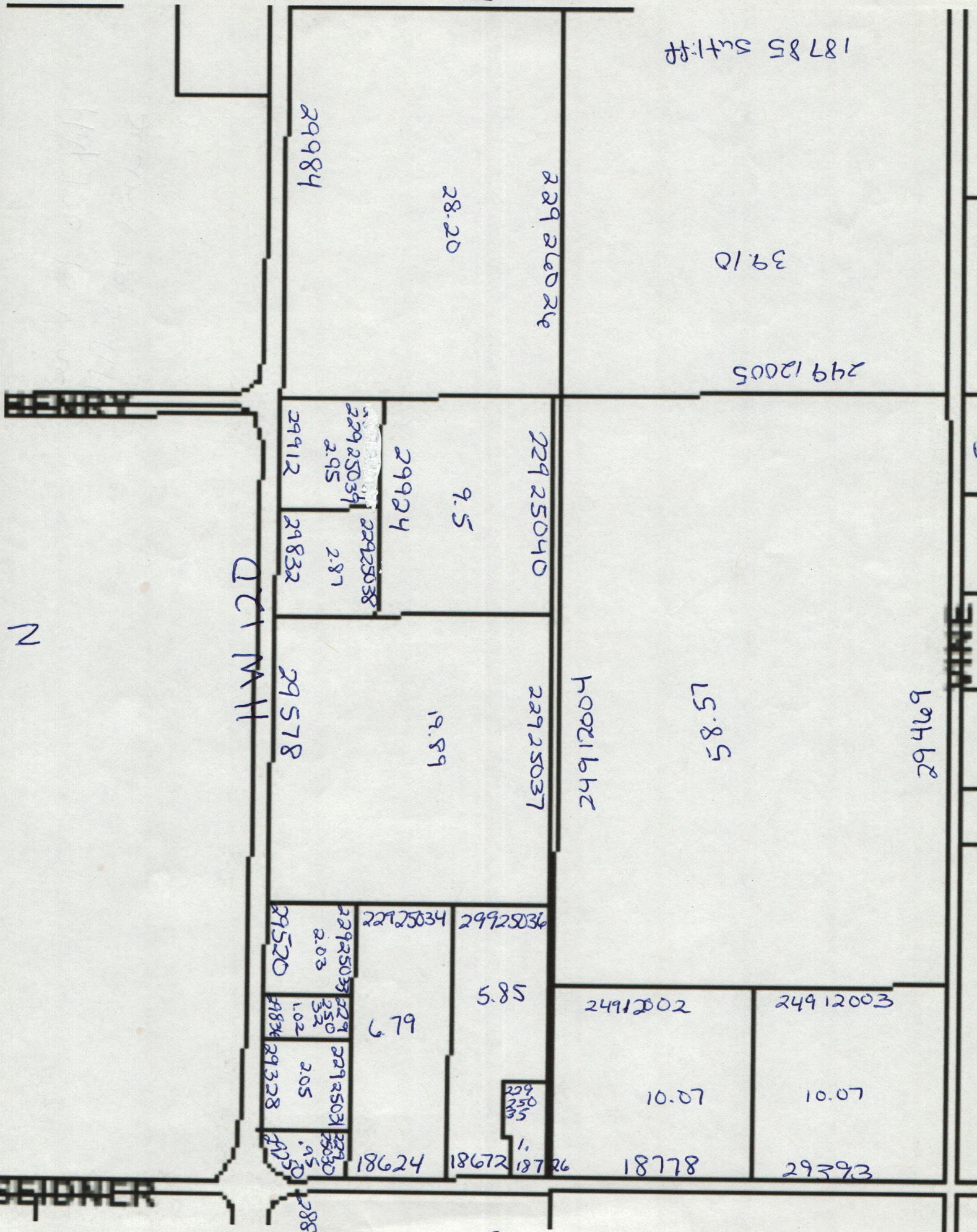
19176

26700

2307 Jackson 371

26702

2505 Jackson 7.57



18785 sub:ff

39.10

24912005

29984

28.20

22926024

S

22925040

9.5

29924

29912

22925039  
2.95

22925038

2.81

29832

DICKINSON

29578

19.89

22925037

24912001

58.57

29469

VINE

N

29520

2.03

22925037

22925034

29925036

5.85

24912002

24912003

6.79

22925037

22925030

22925030

29834

29328

2.05

22925035

1.1

10.07

10.07

18624

18672

18726

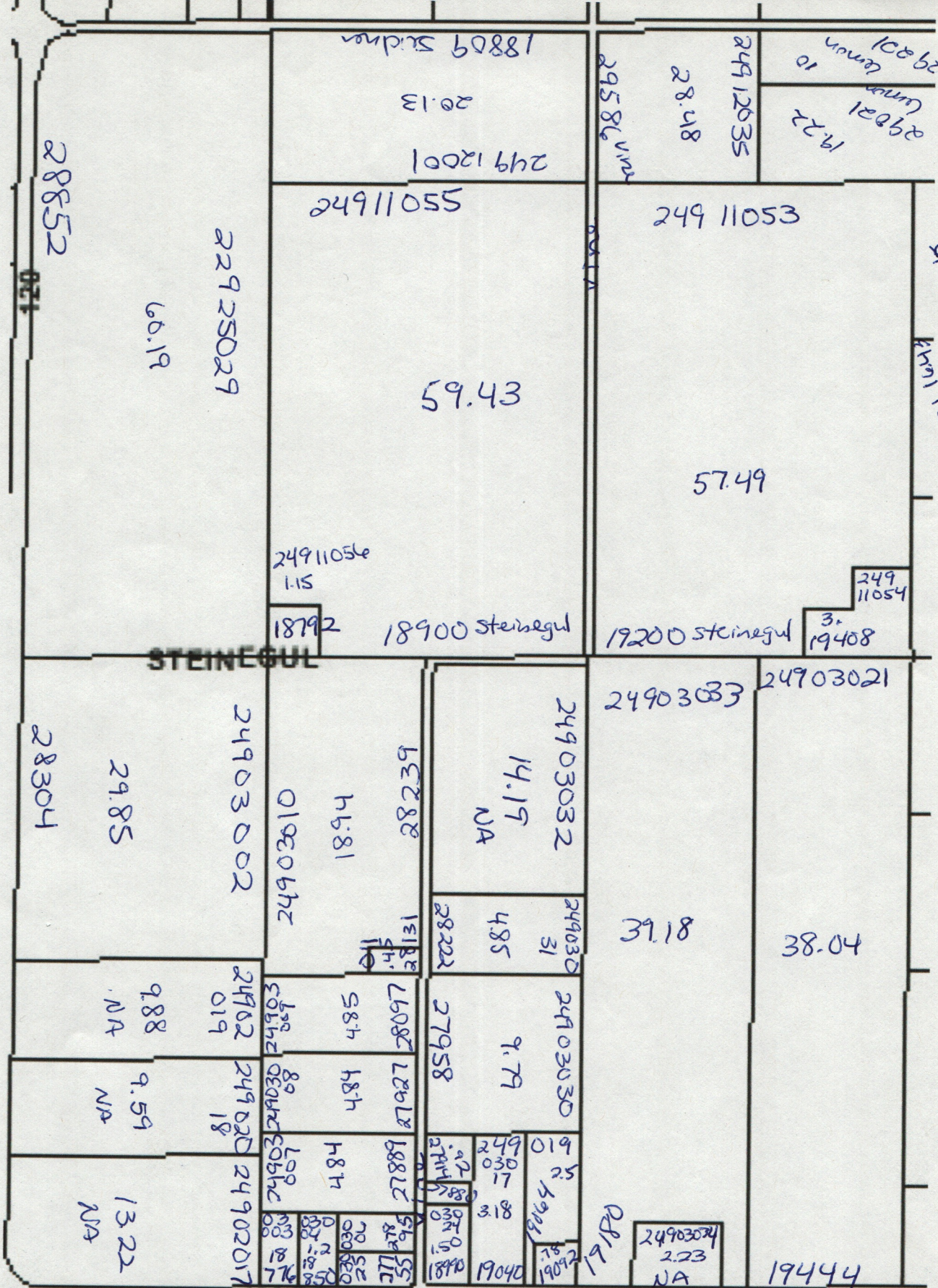
18778

29393

SEIGNER

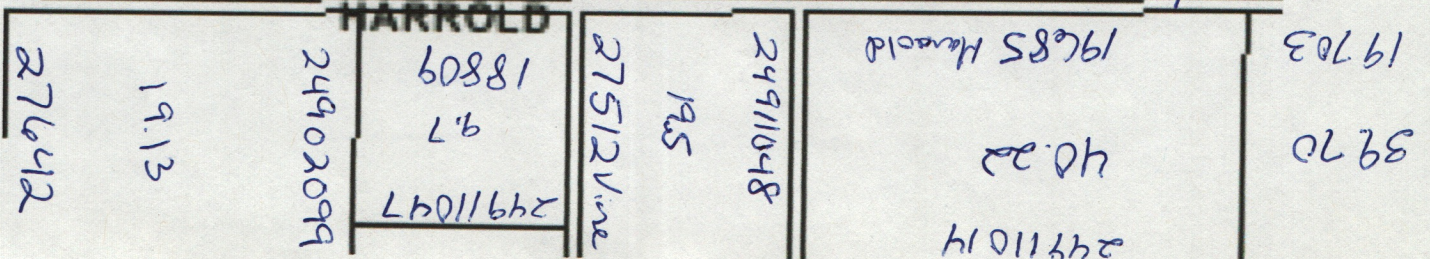
28852

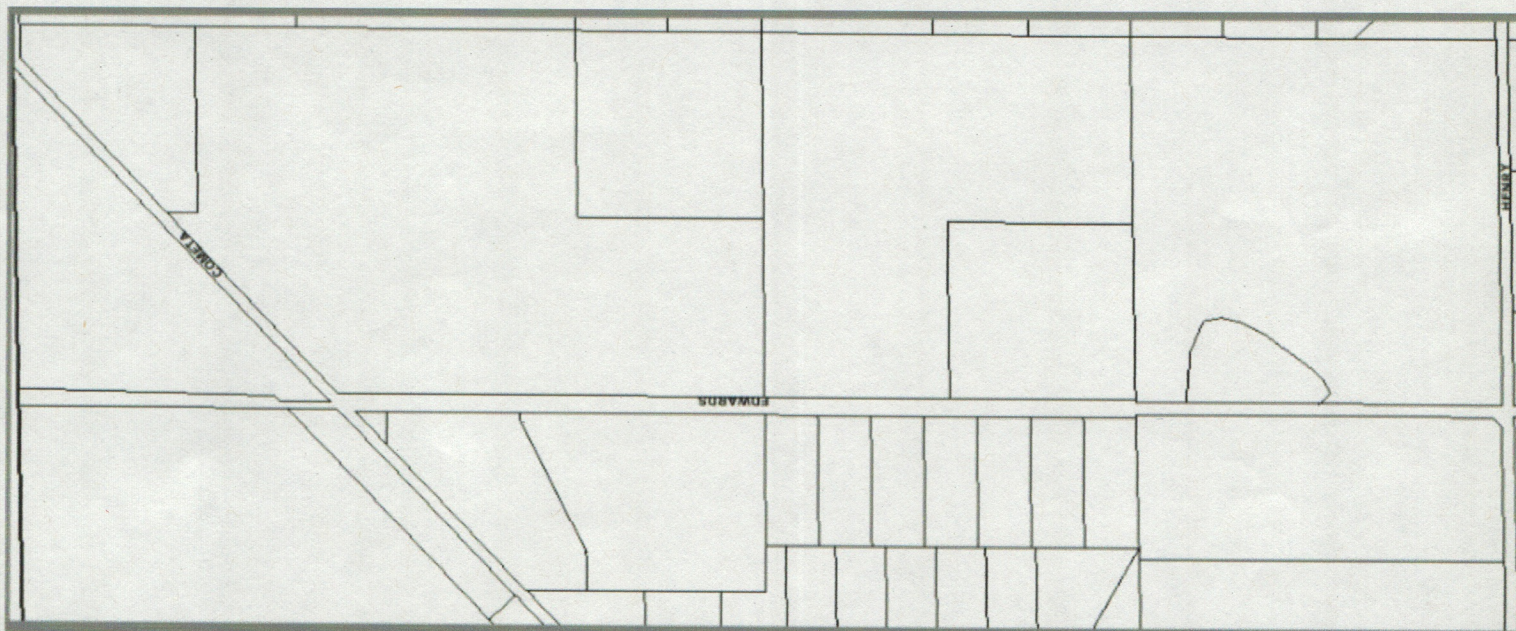
W

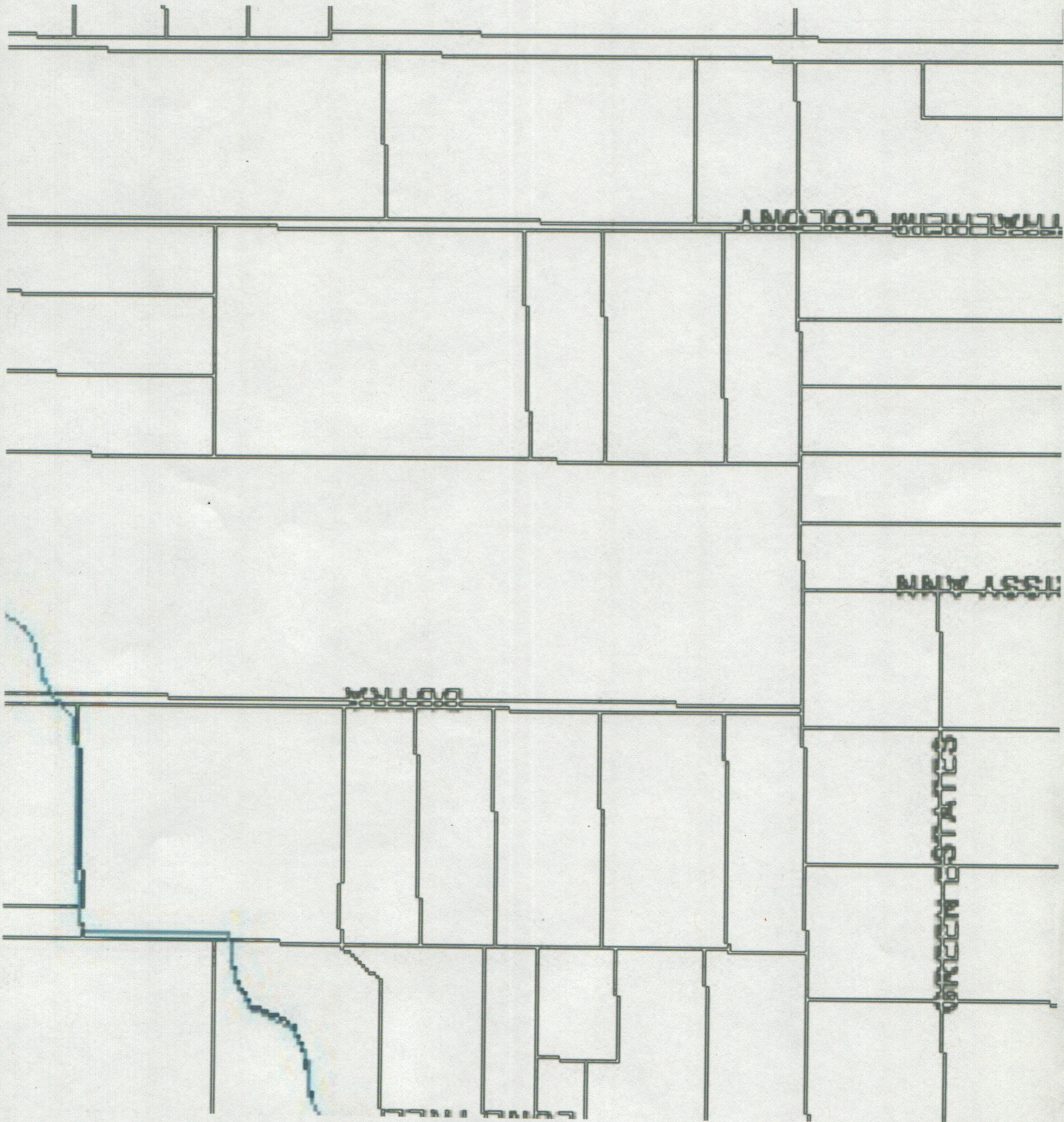


STEINEGUL

HARROLD







GREEN ESTATES

MAY 1911

MAY 1911

GREEN ESTATES

