

# **SAN JOAQUIN COUNTY MOSQUITO & VECTOR CONTROL DISTRICT**

7759 SOUTH AIRPORT WAY, STOCKTON, CA 95206

Telephone: (209) 982-4675 Fax: (209) 982-0120

Website: [www.simosquito.org](http://www.simosquito.org) Email: [district@simosquito.org](mailto:district@simosquito.org)

## **BOARD OF TRUSTEES MEETING**

**Monday, March 17, 2014**

**1:00 P.M.**

All proceedings before the Board of Trustees are conducted in English. The District does not furnish interpreters and, if one is needed, it shall be the responsibility of the person needing one. In compliance with the Americans with Disabilities Act, if you need special assistance to participate in the meetings of the District, please contact the Manager at (209) 982-4675 at least 48 hours prior to the meeting to enable the District to make reasonable arrangements to ensure accessibility.

### **1. CALL TO ORDER; ROLL CALL**

- 2. PUBLIC COMMENT PERIOD** – This time is reserved for members of the public to address the Board of Trustees relative to matters within the jurisdiction of the San Joaquin County Mosquito & Vector Control District. No action may be taken on non-agenda items unless authorized by law. Speakers should hold comments on items listed as a Public Hearing until the Hearing is opened. Comments will be limited to five minutes per person.

### **3. CONSENT CALENDER**

- a. Minutes of the January 21, 2014 regular meeting of the Board of Trustees
- b. Expenditure and financial reports for January and February 2014
- c. District activities report for January and February 2014
- d. Community Education Program report for January and February 2014
- e. Manager's report
- f. Correspondence

### **4. MOSQUITO AND VECTOR CONTROL ASSOCIATION OF CALIFORNIA (MVCAC)**

- a. Report of MVCAC Annual Conference, February 18-21, 2014
- b. MVCAC Annual Conference Presentations from District Staff
- c. Request for authorization to attend MVCAC Spring Quarterly Meeting, April 30 – May 2, 2014

### **5. 2013 ANNUAL STATEMENTS OF ECONOMIC INTERESTS FILINGS (FPPC FORM 700: DISTRICT POLICY 1020)**

### **6. RESOLUTION 13/14-07 (DRAFT) OF THE BOARD OF TRUSTEES DIRECTING THE PREPARATION OF THE ENGINEER'S REPORT FOR THE MOSQUITO, VECTOR, AND DISEASE CONTROL BENEFIT ASSESSMENT FOR FISCAL YEAR 2014-2015**

### **7. AUTHORIZATION TO PURSUE SALE OF SURPLUS DISTRICT PROPERTY**

Board to consider the sale of District Property located at 200 N. Beckman Road, Lodi, CA

**8. REVIEW AND DISCUSSION OF TRUSTEE HEALTH INSURANCE COVERAGE**

Board will consider Trustee Health Insurance Coverage as currently constituted

**9. SPECIAL DISTRICT REPRESENTATION ON THE SAN JOAQUIN LOCAL AGENCY FORMATION COMMISSION (LAFCo)**

**10. CLOSED SESSION (Pursuant to CGC §54956.9)**

CONFERENCE WITH LEGAL COUNSEL – ANTICIPATED LITIGATION 1 CASE (Subdivision (b) of §54956.9)

**REPORT OF CLOSED SESSION**

**11. COMMENTS FROM TRUSTEES AND STAFF ON NON-AGENDA ITEMS**

**12. OTHER BUSINESS; ANNOUNCEMENT OF FUTURE BOARD AND COMMITTEE MEETINGS**

- The next regular meeting of the Board of Trustees will be 1:00 p.m. Tuesday, April 15, 2014

**13. ADJOURN**

# **Board Meeting Information**

**To:** Board of Trustees  
**From:** Eddie Lucchesi, Manager  
**CC:** Chris Eley, Legal Counsel  
**Date:** 3/11/2014  
**Re:** March 2014 BOT Meeting, Agenda Item 3

---

### **3. CONSENT CALENDER**

- a. **Draft minutes of the January 21, 2014 regular meeting of the Board of Trustees**
- b. **Expenditure and Financial reports for January and February 2014**
- c. **District activities report for January and February 2014**
- d. **Community Education Program report for January and February 2014**
- e. **Manager's report**
- f. **Correspondence**

The Consent Calendar consists of items that require approval or acceptance but are self-explanatory and generally require no discussion. If the Board would like to discuss any item listed, it may be pulled from the Consent Calendar and discussed separately.

If there are no items that the Board would like to discuss separately, it is recommended that the Board of Trustees approve the Consent Calendar as presented.

Attachments

**SAN JOAQUIN COUNTY MOSQUITO & VECTOR CONTROL DISTRICT  
7759 SOUTH AIRPORT WAY, STOCKTON, CALIFORNIA 95206**

**MINUTES OF THE BOARD OF TRUSTEES MEETING**

**January 21, 2014**

**1. Call to Order**

The regular meeting of the Board of Trustees of the San Joaquin County Mosquito and Vector Control District was held Tuesday, January 21 2014, at the District's Stockton office. President Marc Warmerdam called the meeting to order at 1:00 p.m.

**Trustees Present:**

Jay Colombini  
Omar Khweiss  
Gary Lambdin  
Chet Miller  
Greg O'Leary  
Marc Warmerdam  
Mike Manna  
Jack Snyder

**Staff Members Present:**

Eddie Lucchesi, Manager  
John Fritz, Asst. Manager  
Carol Aksland, Acting Secretary

**Legal Advisor:**

Christopher K. Eley, Attorney at Law

**Other:**

Zachery Johnson, Stockton Record

**Trustee Absent:**

Jack Fiori  
Frances Groen  
Joy Meeker

**1. Call to Order; Roll Call**

- a. Seating of Officers for the 2014 Board of Trustees  
President – Marc Warmerdam, San Joaquin County  
Vice President – Gary Lambdin, City of Stockton  
Secretary – Joy Meeker, City of Escalon

**2. Public Comment Period**

No comments

**3. Consent Calendar**

- a. Minutes of the December 17, 2013 regular meeting of the Board of Trustees
- b. Expenditure and Financial Reports for December 2013
- c. July 1, 2013 Actuarial Report on GASB 45 Retiree Benefit Valuation
- d. District activities report for December 2013
- e. Public Information & Outreach report for December 2013
- f. Manager's report
- g. Correspondence

Following review and discussion of the Consent Calendar, it was moved by Trustee Lambdin, seconded by Trustee O'Leary, to approve the Consent Calendar as presented; the motion was unanimously approved.

**4. Financial Statements and Independent Auditor's Report for the Year Ending June 30, 2013.**

Anna Lovecchio, CPA, of Croce & Company presented to the Board the District's financial statements and auditor's report for fiscal year 2012-13. Following review and discussion of the financial statements and auditor report, it was moved by Trustee Colombini, seconded by Trustee Manna, to receive the Financial Statements and Independent Auditor's Report for the year ending June 30, 2013; the motion was unanimously approved.

**5. Review and Discussion of Trustee Health Insurance Coverage**

Legal Counsel Eley explained to the Board the reasoning for revisiting the Discussion of Trustee Health Insurance Coverage per District response to the 2012/13 Grand Jury Report. He stated this was an opportunity for the Board to reconsider and provide discussion relative to this issue. President Warmerdam requested Board members to provide their individual positions on health insurance coverage for trustees. Each Board member present provided their individual point of view relative to this issue. Following review and discussion, it was moved by Trustee Snyder, seconded by Trustee Manna to continue providing health care benefits to trustees at the current level. The motion gained the most votes cast, (5 ayes, 2 nays, 1 abstention). However, under Board policy 5040.2 "Action can be taken only by the vote of the majority of the Board of Trustees...." A majority of the Board is 6. Thus while the majority of the votes cast supported the motion, the motion still failed.

Counsel Eley explained that as there was a valid resolution to provide health care to trustees, the failure of this motion did not act to invalidate the previously adopted resolution to provide health care.

No motion was made to modify or terminate the trustee health care program.

Because there was no successful motion on the issue, the Board will consider the issue at its next board meeting.

Following review and discussion, it was moved by Trustee Colombini, seconded by Trustee O'leary to review the matter at the next Board meeting. The motion passed unanimously.

**6. Request for Authorization to Sign a Memorandum of Understanding (MOU) Agreement with the Sacramento/ Yolo Mosquito and Vector Control District for Shared Contracted Large Scale Aerial Spray Services.**

Following review and discussion it was moved by Trustee Manna, seconded by Trustee Snyder, to sign the MOU for shared contracted large scale aerial spray services with the Sacramento/Yolo Mosquito and Vector Control District. The motion was unanimously approved.

**7. Report of White Slough Property Lease Extension With the City of Lodi**

Manager Lucchesi informed the Board the first twenty (20) year term lease agreement with the City of Lodi White Slough Water Pollution Control Facility (District Fish Rearing Facility) concludes February 1, 2014. He stated the District maintains exclusive possession of the premises due to infrastructure improvements made by the District, and has the right to extend the term of the lease on all existing terms and conditions for an additional twenty (20) years. Mr. Lucchesi stated the District notified the city of Lodi of its intent to renew the lease agreement for a second twenty (20) year term. The District will pay an annual rent of \$3,880.70 to the city of Lodi.

**8. Request for Authorization to Develop an Eligibility List for The Position of MCTI, MCTII, and to fill the Vacancy for the Position of Office Secretary**

Manager Lucchesi explained that 3 employees will be retiring in March 2014, and the District needs to develop an eligibility list to fill those positions. In addition, Manager Lucchesi stated the vacant position of Office Secretary also needs to be filled. After review and discussion, it was moved by Trustee Manna and seconded by Trustee Colombini to start the process of filling these positions. This motion was unanimously approved.

**9. CLOSED SESSION (Pursuant to CGC§54956.9)  
CONFERENCE WITH LEGAL COUNSEL-ANTICIPATED LITIGATION  
Significant exposure to litigation pursuant to subdivision (b) of Sec. 54956.9 (1 Potential Case)**

Prior to convening to closed session, President Warmerdam announced the reason for the closed session. The Board convened to closed session at 3:01 p.m. and reconvened to open session at 3:20 p.m.

**REPORT OF CLOSED SESSION:**

Legal Counsel Eley stated for Item 9, there was discussion only, and no action was taken.

**10. Consideration of Tort Claim**

Legal counsel Eley reviewed the Tort Claim of former employee Michelle Morgan. After review and discussion, Trustee Khweiss made a motion to reject the claim. The motion was seconded by Trustee Lambdin and unanimously approved.

**11. Comments from Trustees and Staff on Non-Agenda Items**

None

**12. Other Business; Announcement of Future Board and Committee Meetings**

- The next regular meeting of the Board of Trustees will be 1:00 p.m. Tuesday, March 17, 2014.

**13. Adjournment**

There being no further business, it was moved by Trustee Manna, seconded by Trustee Khweiss, to adjourn the meeting at 3:25 p.m.; the motion passed unanimously.

---

**MS. JOY MEEKER, SECRETARY**

---

**MR. EDDIE LUCCHESI, MANAGER**

**DRAFT**

**San Joaquin County Mosquito & Vector Control District  
FUND BALANCE REPORT  
January 2014**

	SJC-55401 GEN FUND	SJC-55402 GEN ASSESSMENTS	SJC-55411 CONTINGENT	SJC-55412 GEN RESERVE	ALL FUNDS TOTAL
DISTRICT OPERATIONS					
REVENUES	82,237.15	11,827.46	673.00	1,321.00	
TRANSFER IN	-	-	-	-	
NET (EXPENSES) REVENUES	\$ 82,237.15	\$ 11,827.46	\$ 673.00	\$ 1,321.00	
EXPENSES	601,190.18	-	-	-	
TRANSFER OUT	-	-	-	-	
NET (EXPENSES) REVENUES	\$ 601,190.18	\$ -	\$ -	\$ -	
REVENUES:					
PROPERTY TAX, Resid Distri's	20,955.17	-	-	-	
ST-HOMEOWNER PROP TAX	-	-	-	-	
INTEREST INCOME	2,915.00	275.00	673.00	1,321.00	
OTHER GOVT PASS THROUGH	-	-	-	-	
SPECIAL ASSESSMENTS CURR	-	11,552.46	-	-	
MISC. REVENUES	1,936.37	-	-	-	
**MEDICAL REIMBURSEMENT	56,430.61	-	-	-	
TOTAL REVENUES	\$ 82,237.15	\$ 11,827.46	\$ 673.00	\$ 1,321.00	\$ 96,058.61
<hr/>					
BEGINNING BALANCE, AUDITOR'S, 12/31/13	5,337,530.47	921,309.86	1,075,901.00	2,112,854.00	
ENDING BALANCE, AUDITOR'S, 01/31/14	5,013,416.26	933,137.32	1,076,574.00	2,114,175.00	
DEPOSIT IN TRANSIT	-	-	-	-	
REVOLVING FUND BALANCE, 01/31/14	425,930.86	-	-	-	
CALCRD PAYABLE	(5,170.20)	-	-	-	
ADJUSTED ENDING BALANCE, 01/31/14	\$ 5,434,176.92	\$ 933,137.32	\$ 1,076,574.00	\$ 2,114,175.00	\$ 9,558,063.24
ENDING FUND BALANCE, 01/31/13	\$ 5,654,631.49	\$ 738,348.58	\$ 1,075,248.00	\$ 2,816,882.00	\$ 10,285,110.07

**Revenue, SJC-55401**

Medical Reimbursement includes the following reimbursements to the District:

- a. District's contribution to EE's Plan 125 used to purchase health insurance, \$40,457.10
- b. EE's out of pocket cost, \$10,085.25

**Expenses, SJC-55401**

Includes the District's contribution to EE's Plan 125, \$30,870.03



# San Joaquin County Mosquito & Vector Control District Expenses by Vendor Summary

January 2014

	<u>Jan 14</u>
A-1 Saw & Mower Inc.	64.63
ACE Hardware	48.65
ACME Saw N Industrial Supply	36.59
ACS All City Safety	242.71
AirCall Wireless	878.00
Airgas	206.17
American Mosquito Control Association	1,115.00
Bay Alarm	234.00
Best Buy	122.29
Big W Sales	124.51
C & R Fence Contractors, Inc.	175.00
CA Dept. of Motor Vehicle	3.00
CA Employment Development Dept.	98.44
CalPERS	58,277.88
CalPERS, Fiscal Services Division (OPEB)	45,504.00
Chevron and Texaco Card Services	1,536.14
City of Lodi	352.12
City of Stockton	211.25
City Parkings	4.00
Clutch & Brake Xchange Inc.	101.65
Croce & Company	17,250.00
De Lage Landen Financial Services	213.79
Delta Dental	5,372.01
Delta Pump Co.	89.00
Dorfman-Pacific Co., Inc.	128.70
Electronic Data Solutions	39,410.09
Eley, Christopher K	2,310.00
Entomological Society of America	144.00
Farwest Steel	97.80
French Camp McKinley Fire Protection Dist	74.00
G&K Services	175.66
Golden Bear Fire Extinguisher Co.	227.50
Grainger	257.86
Hewlett-Packard Financial Services Co.	515.66
Hicks Pension Services	300.00
Imperial Building Maintenance	342.85
Integrated DNA Technologies, Inc.	25.98
Iron Circle	1,000.00
J. Milano Co., Inc.	144.15
Lucas Business Systems	101.47
Mayaco, Marketing&Internet	175.00
Merit Supply Inc.	246.27
Mosquito&Vector Control Association of Ca	960.00
Nationalwide Retirement Solutions	50.00
Nestle Pure Life Direct, Nestle Water	40.78
Newegg	210.69
Office Depot	159.17
Pacific Gas&Electric Co.	2,214.87
PCM-G	1,444.97
Petty Cash	44.58
Qiagen	154.46
Richard Chiapparelli Electric	60.00
Safety-Kleen	423.39
Shuttle Services	59.00

San Joaquin County Mosquito & Vector Control District  
Expenses by Vendor Summary  
January 2014

	<u>Jan 14</u>
Simply Hired	99.00
Smart&Final	41.69
SouthWest Airline	1,447.00
Splashtop	60.00
Steam Cleaners Stockton Inc.	124.50
Stericycle Inc.	129.41
Stockton Auto Glass	50.00
Stockton Filter Supply Co., Inc.	229.07
Stockton Scavengers Association, Inc	120.40
SuperShuttle	34.00
TerryBerry	94.94
The Home Depot CRC/GECF	19.60
Tom Hillier Ford	348.26
Tri-Valley Line X, Inc.	691.25
United Air	221.00
Unum Life Insurance	2,542.33
US Health Works Medical Group	85.00
US PostMaster	3.56
Vision Service Plan CA	765.23
VWR International	139.47
<b>TOTAL</b>	<b><u><u>191,005.44</u></u></b>

San Joaquin County Mosquito & Vector Control District  
Budget and Actual Comparison, Revenues  
July 2013 through January 2014

General Revenue

	Jul '13 - Jan 14	Budget	\$ Over Budget	% of Budget
47000000-MISC. REVENUES				
470600101-OUTLAWED WARRANTS	-	-	-	0.0%
470600201-OUTLAWED WAR.DISTRICT	-	-	-	0.0%
4707000000-OTHER MISC REVENUES				
4707000101-SALES CAPITAL ASSETS	74,448.00	5,000.00	69,448.00	1,488.96%
4707000201-SALES NONCAP ASSETS	-	150.00	(150.00)	0.0%
4707000401-CALCARD REBATE	11,538.27	15,000.00	(3,461.73)	76.92%
4707000501-WC DISABILITY	9,448.11	-	9,448.11	100.0%
4707000601-PAYROLL OTHERS	40.00	-	40.00	100.0%
4707000701-TB ABATED	-	-	-	0.0%
4707001010-OTHERS	11,544.01	5,000.00	6,544.01	230.88%
4707001011-MED INSUR REBATES				
470700101104-MIR EE PLAN 125	213,437.92	412,410.00	(198,972.08)	51.75%
470700101103-MIR EE OUTFPOCKET	35,733.43	62,575.00	(26,841.57)	57.11%
470700101102-MIR RETIREES	32,175.25	59,312.00	(27,136.75)	54.25%
470700101101-MIR TRUSTEES	4,920.08	8,502.00	(3,581.92)	57.87%
Total 4707001011-MED INSUR REBATES	286,266.68	542,799.00	(256,532.32)	52.74%
Total 4707000000-OTHER MISC REVENUES	393,285.07	567,949.00	(174,663.93)	69.25%
Total 47000000-MISC. REVENUES	393,285.07	567,949.00	(174,663.93)	69.25%
4100000 - PROPERTY TAX				
4101000100-REDEV RESIDU DISTRI	20,955.17	25,390.00	(4,434.83)	82.53%
4100100010-SECURED	1,843,089.87	3,373,405.00	(1,530,315.13)	54.64%
4102070 - SECURED SB813	11,885.55	10,000.00	1,885.55	118.86%
4101000 - UNSECURED	216,968.58	224,620.00	(7,651.42)	96.59%
4101070 - UNSECURED SB813	54.01	-	54.01	100.0%
4101020 - SB813 PRIR	21.23	-	21.23	100.0%
4101030 - UNSECURED PRIOR	42.17	-	42.17	100.0%
Total 4100000 - PROPERTY TAX	2,093,016.58	3,633,415.00	(1,540,398.42)	57.61%
4400000 - INTEREST INCOME				
4401204 - CITIZENS BUS BANK MMKT	6.15	10.00	(3.85)	61.5%
4455401 - GEN FUND	9,334.00	11,480.00	(2,146.00)	81.31%
4455402 - SPEC ASSESSMENTS	874.00	870.00	4.00	100.46%
4455411 - CONTINGENT	1,967.00	2,640.00	(673.00)	74.51%
4455412 - GEN RESERVE	4,175.00	6,610.00	(2,435.00)	63.16%
Total 4400000 - INTEREST INCOME	16,356.15	21,610.00	(5,253.85)	75.69%

San Joaquin County Mosquito & Vector Control District  
Budget and Actual Comparison, Revenues  
July 2013 through January 2014

	<u>Jul '13 - Jan 14</u>	<u>Budget</u>	<u>\$ Over Budget</u>	<u>% of Budget</u>
4400604 · STATE OTHER IN LIEU TX HWY PROP	-	-	-	0.0%
4500000 · AID FRM OTHER GOVT AGENCIES				
4505110 · STATE IN LIEU TAXES	26.26	-	26.26	100.0%
4505500 · STATE AID HOMEOWNER PROPTX	21,602.90	45,020.00	(23,417.10)	47.99%
4576000 · OTHER GOVT REDEVL P PASS THRU	14,293.63	22,530.00	(8,236.37)	63.44%
<b>Total 4500000 · AID FRM OTHER GOVT AGENCIES</b>	<u>35,922.79</u>	<u>67,550.00</u>	<u>(31,627.21)</u>	<u>53.18%</u>
4605000 · CHARGES FOR SERVICES				
4605116370155401 SPECIAL TAX	560,969.89	1,058,075.00	(497,105.11)	53.02%
4605116370255402- BEN ASSESSMNT	946,351.24	1,780,915.00	(834,563.76)	53.14%
<b>Total 4605000 · CHARGES FOR SERVICES</b>	<u>1,507,321.13</u>	<u>2,838,990.00</u>	<u>(1,331,668.87)</u>	<u>53.09%</u>
<b>Total Income</b>	4,045,901.72	7,129,514.00	(3,083,612.28)	56.75%

San Joaquin County Mosquito & Vector Control District  
Budget and Actual Comparison, Expenses

July 2013 through January 2014

Ordinary Expenses	Jan-14	Jul '13 - Jan 14	Budget	\$ Over Budget	% of Budget
Expense					
6000000 · EE SALARIES & WAGES					
6001011 · Manager	15,025.38	75,126.90	125,940.00	(50,813.10)	59.65%
6001012 · Assistant Manager	11,837.70	58,632.96	102,820.00	(44,187.04)	57.03%
6001013 · Public Info Officer	8,844.57	44,227.91	76,655.00	(32,427.09)	57.7%
6001014 · Administrative Assistant	7,638.66	38,197.84	66,205.00	(28,007.16)	57.7%
6001015 · Secretary	179.88	179.88	48,595.00	(48,415.12)	0.37%
6002011 · Entomologist	11,050.20	55,251.00	95,770.00	(40,519.00)	57.69%
6002012 · Assistant Entomologist	7,602.39	38,011.95	65,890.00	(27,878.05)	57.69%
6002013 · Micro Biologist	5,958.15	29,790.75	58,490.00	(28,699.25)	50.93%
6002014 · Lab. Tech I	6,679.29	33,396.45	57,890.00	(24,493.55)	57.69%
6003011 · Mech II	8,343.90	41,719.50	72,315.00	(30,595.50)	57.69%
6003012 · Mech I	6,889.56	34,447.80	59,710.00	(25,262.20)	57.69%
6004011 · Fishery Manager	7,615.59	38,077.95	66,005.00	(27,927.05)	57.69%
6004012 · Assistant Fish Hatchery	4,867.02	24,335.10	42,425.00	(18,089.90)	57.36%
6005011 · Mosq. Control Supervisor	27,328.62	135,894.40	236,245.00	(100,350.60)	57.52%
6005012 · MC Tech II	24,125.79	120,628.95	209,095.00	(88,466.05)	57.69%
6005013 · MC Tech I	106,142.82	529,452.12	929,210.00	(399,757.88)	56.98%
6006011 · Board of Trustees	2,150.00	7,490.00	13,200.00	(5,710.00)	56.74%
6007011 · REG EXTRA HELP	1,309.00	24,761.99	50,000.00	(25,238.01)	49.52%
6008010 · Veh/Ret/Perf/Ed/Etc.					
6008011-District Veh	180.00	900.00	1,560.00	(660.00)	57.69%
6008012-Ed Incentive	769.17	3,836.25	6,670.00	(2,833.75)	57.52%
Total 6008010 · Veh/Ret/Perf/Ed/Etc.	949.17	4,736.25	8,230.00	(3,493.75)	57.55%
Total 6000000 · EE SALARIES & WAGES	264,537.69	1,334,359.70	2,384,690.00	(1,050,330.30)	55.96%
6010000 · EMPLOYEE BENEFITS					
6010100000-UNEMPLOYMENT INS	98.44	687.31	15,245.00	(14,557.69)	4.51%
6010800000 OTHER-DEF COMP	50.00	250.00	500.00	(250.00)	50.0%
6020000000-RET DIST SHARE	82,304.41	384,257.31	684,370.00	(300,112.69)	56.15%
6040000000-LIFE INSURANCE	226.80	1,593.90	2,650.00	(1,056.10)	60.15%
6091000000-A3R Plan125 ERContri	42,732.45	225,045.13	433,010.00	(207,964.87)	51.97%
6050000000-HEALTH INSURANCE					
605104 · Sick Leave Bank Payable	1,248.17	8,102.35	35,000.00	(26,897.65)	23.15%
6050101 · Dental	5,372.01	37,245.12	65,295.00	(28,049.88)	57.04%
6050102 · MEDICAL	58,277.88	393,926.69	710,250.00	(316,323.31)	55.46%
6050103 · VISION	765.23	5,494.14	10,180.00	(4,685.86)	53.97%
Total 6050000000-HEALTH INSURANCE	65,663.29	444,768.30	820,725.00	(375,956.70)	54.19%
6050000200-OPEB TRUST CONTRI	45,504.00	45,504.00	-	45,504.00	100.0%

San Joaquin County Mosquito & Vector Control District  
 Budget and Actual Comparison, Expenses

July 2013 through January 2014

	Jan-14	Jul '13 - Jan 14	Budget	\$ Over Budget	% of Budget
6050000214 EE COMP ABSENCE					
6500214-1 Vacation Payout	-	-	53,740.00	(53,740.00)	0.0%
6050214-2 Sick Leave Payout	-	-	6,215.00	(6,215.00)	0.0%
Total 6050000214 EE COMP ABSENCE	-	-	59,955.00	(59,955.00)	0.0%
6060200000-DISABLE INS	2,315.53	16,231.70	27,460.00	(11,228.30)	59.11%
60300 - OASDI DISTRICT					
6030000000-SS REG EE	-	-	3,718.00	(3,718.00)	0.0%
60300-1 VLP SS Tax	15,610.93	78,168.27	147,755.00	(69,586.73)	52.9%
6030000000-SS REG EE - Other	15,610.93	78,168.27	151,473.00	(73,304.73)	51.61%
Total 6030000000-SS REG EE					
6030100000-MEDICARE REG					
60301-1 VLP Medicare Tax	-	-	872.00	(872.00)	0.0%
6030100000-MEDICARE REG - Other	3,650.95	18,461.41	34,700.00	(16,238.59)	53.2%
Total 6030100000-MEDICARE REG	3,650.95	18,461.41	35,572.00	(17,110.59)	51.9%
6030200000-SS UTILITY	81.16	1,535.25	3,100.00	(1,564.75)	49.52%
6030300000-MEDICAR UTILITY	18.98	359.05	730.00	(370.95)	49.19%
Total 60300 - OASDI DISTRICT	19,362.02	98,523.98	190,875.00	(92,351.02)	51.62%
Total 6010000 - EMPLOYEE BENEFITS	258,256.94	1,216,861.63	2,234,790.00	(1,017,928.37)	54.45%
62000 - GEN SRVS&SUPPLIES					
6201000 - OFFICE EXPENSE GEN					
6201001 - GEN OFFICE EXPENSES	390.84	4,353.23	10,000.00	(5,646.77)	43.53%
6201003 - SMALL DEVICES NONCAPITAL	210.69	210.69	1,000.00	(789.31)	21.07%
Total 6201000 - OFFICE EXPENSE GEN	601.53	4,563.92	11,000.00	(6,436.08)	41.49%
6206000000-COMMUNICATIONS	878.00	11,557.93	21,350.00	(9,792.07)	54.14%
6209000 - MEMBERSHIPS	144.00	17,720.00	18,300.00	(580.00)	96.83%
6211000 - MAINT-EQUIPMENT	2,535.75	34,501.73	50,000.00	(15,498.27)	69.0%
6211004 - FUEL, LUBE & OIL	1,536.14	60,598.79	122,500.00	(61,901.21)	49.47%
6214000 - RENTS&LEASES-EQUIP	742.39	5,656.04	11,000.00	(5,343.96)	51.42%
6217000 - TRANS&TRAVEL					
6217101 - MEALS		1,014.70	500.00	514.70	202.94%
6217102 - MEALS/REFRESHMENT NONCONFERENCE	7.50	439.24	500.00	(60.76)	87.85%
6217202 - CONFERENCE	2,075.00	2,075.00	500.00	1,575.00	415.0%
6217000 - TRANS&TRAVEL - Other	1,765.00	5,755.24	23,500.00	(17,744.76)	24.49%
Total 6217000 - TRANS&TRAVEL	3,847.50	9,284.18	25,000.00	(15,715.82)	37.14%

San Joaquin County Mosquito & Vector Control District  
Budget and Actual Comparison, Expenses

July 2013 through January 2014

	Jan-14	Jul '13 - Jan 14	Budget	\$ Over Budget	% of Budget
6220001 · AUDITORS PAYROLL&AP	-	-	3,000.00	(3,000.00)	0.0%
6220095 · AUDTR DIR ASSM SRV	-	-	12,000.00	(12,000.00)	0.0%
6220195 · 55401- AUDITOR DIR ASSESS CHRG	-	-	18,000.00	(362.08)	97.99%
6220295 · 55402-AUDITOR DIR ASSESS CHRG	-	17,637.92	30,000.00	(12,362.08)	58.79%
Total 6220095 · AUDTR DIR ASSM SRV	-	17,637.92			
6221000 · PROF&SPEC SRVS					
6221001 · LEGAL&ACCTING	19,560.00	33,508.00	65,000.00	(31,492.00)	51.55%
6221002 · CONTR AIRCRAFT	-	307,489.60	510,000.00	(202,510.40)	60.29%
6221003 · OTHERS	563.00	26,384.57	73,260.00	(46,875.43)	36.02%
Total 6221000 · PROF&SPEC SRVS	20,123.00	367,382.17	648,260.00	(280,877.83)	56.67%
6221012 · TX ADMIN CHRGS	-	41,629.50	85,000.00	(43,370.50)	48.98%
6221050400-LAB EXP	-	-	1,500.00	(1,403.22)	6.45%
622150401 SM LAB EQUIP/FURNTR	477.16	96.78	35,000.00	(11,824.68)	66.22%
6221050400-LAB EXP - Other	477.16	23,175.32	36,500.00	(13,227.90)	63.76%
Total 6221050400-LAB EXP		23,272.10			
6226001600-PERMITSLIC'S OTHER	-	4,035.00	6,700.00	(2,665.00)	60.22%
6226016000-SOFTWARE TECHSUP/LIC	1,504.97	9,238.08	19,150.00	(9,911.92)	48.24%
6226601700-COMMUNITY OUTREACH	-	13,063.30	40,000.00	(26,936.70)	32.66%
6226019120-ANIMAL/FISH FEED	-	1,865.66	7,000.00	(5,134.34)	26.65%
6226019121-Fish	-	1,865.66	7,000.00	(5,134.34)	26.65%
Total 6226019120-ANIMAL/FISH FEED					
6226000 · DISTRICT SPEC EXP	94.94	3,046.75	2,500.00	546.75	121.87%
6226013 · TRAINING-ED EXPENSES	-	340.00	2,500.00	(2,160.00)	13.6%
6230000 · INSURANCE					
6232010 · INSURANCE-WORKERS COMP	-	129,083.00	116,620.00	12,463.00	110.69%
6236000 · INSUR-Prop/Fidelity/NOWAircraft	-	80,700.00	82,645.00	(1,945.00)	97.65%
6230000 · INSURANCE - Other	-	-	6,400.00	(6,400.00)	0.0%
Total 6230000 · INSURANCE	-	209,783.00	205,665.00	4,118.00	102.0%
6238000 · MISC EXP					
6238001 · BANK CHARGE	-	1.46	800.00	(798.54)	0.18%
6238002 · CASH SHORT/OVER CASH BOX	-	-	50.00	(50.00)	0.0%
6238000 · MISC EXP - Other	8.33	308.10	1,450.00	(1,141.90)	21.25%
Total 6238000 · MISC EXP	8.33	309.56	2,300.00	(1,990.44)	13.46%

San Joaquin County Mosquito & Vector Control District  
Budget and Actual Comparison, Expenses

July 2013 through January 2014

	Jan-14	Jul '13 - Jan 14	Budget	\$ Over Budget	% of Budget
6240000 · CLTHN&PRSNAL SUPP	547.07	6,425.12	14,500.00	(8,074.88)	44.31%
6246000 · HOUSEHOLD EXP					
6246000101-Haz Mat Dispo	21.93	99.08	600.00	(500.92)	16.51%
6246000 · HOUSEHOLD EXP - Other	751.21	9,131.55	18,000.00	(8,868.45)	50.73%
Total 6246000 · HOUSEHOLD EXP	773.14	9,230.63	18,600.00	(9,369.37)	49.63%
6249000 · UTILITIES	2,778.24	23,198.71	35,000.00	(11,801.29)	66.28%
6252000000-AGRI CHEM					
6252000100-FISHERY	-	7,523.44	15,300.00	(7,776.56)	49.17%
6252000000-AGRI CHEM - Other	-	591,458.08	1,300,000.00	(708,541.92)	45.5%
Total 6252000000-AGRI CHEM	-	598,981.52	1,315,300.00	(716,318.48)	45.54%
6260000 · MAINT STRUCT&GROUNDS	428.60	10,108.26	35,000.00	(24,891.74)	28.88%
6264000 · RENT-STRUCT&GROUND	74.00	518.00	2,600.00	(2,082.00)	19.92%
6269000 · SM TOOL&INSTRMNT	-	125.48	1,200.00	(1,074.52)	10.46%
Total 620000 · GEN SRVS&SUPPLIES	37,094.76	1,484,073.35	2,769,925.00	(1,285,851.65)	53.58%
Total Expense	559,889.39	4,035,294.68	7,389,405.00	(3,354,110.32)	54.61%
Other Expense					
6300000 · OTHER CHARGES					
6301000 · CONTRI OTHER AGENCY					
6301002 · CMVCA RESEARCH FOUNDATION	-	38,160.00	38,160.00	-	100.0%
6301003 · SJC FARM BUREAU	-	-	600.00	(600.00)	0.0%
6301004 · OTHERS	-	-	1,000.00	(1,000.00)	0.0%
Total 6301000 · CONTRI OTHER AGENCY	-	38,160.00	39,760.00	(1,600.00)	95.98%
6381000 · TXS&ASSMNTS					
Total 6300000 · OTHER CHARGES		38,160.00	39,860.00	(1,700.00)	95.74%
6400000 · CAPITAL EXPENSE					
6411000 · STRUCT& IMPROVS					
6411001 · STOCKTON	-	41,253.00	80,000.00	(38,747.00)	51.57%
6411005 · WHITE SLOUGH	-	13,483.00	18,000.00	(4,517.00)	74.91%
6411006 · LODI	-	-	-	-	0.0%
6411008 · ESCALON	-	25,779.83	250,000.00	(224,220.17)	10.31%
Total 6411000 · STRUCT& IMPROVS	-	80,515.83	348,000.00	(267,484.17)	23.14%
6451000 · EQUIPMENT					



**San Joaquin County Mosquito & Vector Control District  
Budget and Actual Comparison, Expenses  
July 2013 through January 2014**

	<u>Jan-14</u>	<u>Jul '13 - Jan 14</u>	<u>Budget</u>	<u>\$ Over Budget</u>	<u>% of Budget</u>
6451001001-SHOP/VEH REPLACEMENT	1,890.70	2,152.74	52,000.00	(49,847.26)	4.14%
6451001002-SOFTWARES/PROGRAMS	-	-	10,000.00	(10,000.00)	0.0%
6451001003-EQUIP/LAB	-	-	20,000.00	(20,000.00)	0.0%
6451001004-EQUIP/FIELD/FISH	39,410.09	40,752.39	32,000.00	8,752.39	127.35%
6451001005-EQUIP/OFFICE	-	-	10,000.00	(10,000.00)	0.0%
<b>Total 6451000 - EQUIPMENT</b>	<b>41,300.79</b>	<b>42,905.13</b>	<b>124,000.00</b>	<b>(81,094.87)</b>	<b>34.6%</b>
<b>Total 6400000 - CAPITAL EXPENSE</b>	<b>41,300.79</b>	<b>123,420.96</b>	<b>472,000.00</b>	<b>(348,579.04)</b>	<b>26.15%</b>
<b>Total Other Expense</b>	<b>41,300.79</b>	<b>161,580.96</b>	<b>511,860.00</b>	<b>(350,279.04)</b>	<b>31.57%</b>
<b>TOTALS</b>	<b>601,190.18</b>	<b>4,196,875.64</b>	<b>7,901,265.00</b>	<b>(3,704,389.36)</b>	<b>53.12%</b>

**San Joaquin County Mosquito & Vector Control District  
FUND BALANCE REPORT  
February 2014**

	SJC-55401 GEN FUND	SJC-55402 BEN ASSESSMENTS	SJC-55411 CONTINGENT	SJC-55412 GEN RESERVE	ALL FUNDS TOTAL
<b>DISTRICT OPERATIONS</b>					
REVENUES	45,943.38	1,359.58	-	-	-
TRANSFER IN	-	-	-	-	-
<b>NET (EXPENSES) REVENUES</b>	<b>\$ 45,943.38</b>	<b>\$ 1,359.58</b>	<b>\$ -</b>	<b>\$ -</b>	<b>\$ -</b>
EXPENSES	400,681.68	-	-	-	-
TRANSFER OUT	250,000.00	-	-	-	-
<b>NET (EXPENSES) REVENUES</b>	<b>\$ 650,681.68</b>	<b>\$ -</b>	<b>\$ -</b>	<b>\$ -</b>	<b>\$ (603,378.72)</b>
REVENUES:					
PROPERTY TAX, Resid Distri's	-	-	-	-	-
ST-HOMEOWNER PROP TAX	-	-	-	-	-
INTEREST INCOME	-	-	-	-	-
OTHER GOVT PASS THROUGH	-	-	-	-	-
SPECIAL ASSESSMENTS CURR	-	1,359.58	-	-	-
MISC. REVENUES	6,407.30	-	-	-	-
**MEDICAL REIMBURSEMENT	39,536.08	-	-	-	-
<b>TOTAL REVENUES</b>	<b>\$ 45,943.38</b>	<b>\$ 1,359.58</b>	<b>\$ -</b>	<b>\$ -</b>	<b>\$ 47,302.96</b>
<hr/>					
BEGINNING BALANCE, AUDITOR'S, 01/31/14	5,013,416.26	933,137.32	1,076,574.00	2,114,175.00	
ENDING BALANCE, AUDITOR'S, 02/28/14	4,539,042.16	934,496.90	1,076,574.00	2,114,175.00	
DEPOSIT IN TRANSIT	-	-	-	-	-
REVOLVING FUND BALANCE, 02/28/14	569,157.44	-	-	-	-
CALCRD PAYABLE	-	-	-	-	-
<b>ADJUSTED ENDING BALANCE, 02/28/14</b>	<b>\$ 5,108,199.60</b>	<b>\$ 934,496.90</b>	<b>\$ 1,076,574.00</b>	<b>\$ 2,114,175.00</b>	<b>\$ 9,233,445.50</b>
ENDING FUND BALANCE, 02/28/13	\$ 4,537,267.08	\$ 728,037.80	\$ 1,076,586.00	\$ 2,628,844.00	\$ 8,970,734.88

**Expenses, SJC-55401**

Includes the District's contribution to EE's Plan 125, \$28,443.27

**Revenue, SJC-55401**

Medical Reimbursement includes the following reimbursements to the District:

- a. District's contribution to EE's Plan 125 used to purchase health insurance, \$26,926.37
- b. EE's out of pocket cost, \$6,721.45

San Joaquin County Mosquito & Vector Control District  
Budget and Actual Comparison, Expenses  
July 2013 through February 2014

	Feb-14	Jul '13 - Feb 14	Budget	\$ Over Budget	% of Budget
<b>Ordinary Expense</b>					
<b>Expense</b>					
6000000 · EE SALARIES & WAGES					
6001011 · Manager	10,016.92	85,143.82	125,940.00	(40,796.18)	67.61%
6001012 · Assistant Manager	7,891.80	66,524.76	102,820.00	(36,295.24)	64.7%
6001013 · Public Info Officer	5,896.38	50,124.29	76,655.00	(26,530.71)	65.39%
6001014 · Administrative Assistant	5,092.44	43,290.28	66,205.00	(22,914.72)	65.39%
6001015 · Secretary	-	179.88	48,595.00	(48,415.12)	0.37%
6002011 · Entomologist	7,366.80	62,617.80	96,770.00	(33,152.20)	65.38%
6002012 · Assistant Entomologist	5,068.26	43,080.21	65,890.00	(22,809.79)	65.38%
6002013 · Micro Biologist	3,972.10	33,762.85	58,490.00	(24,727.15)	57.72%
6002014 · Lab. Tech I	4,452.86	37,849.31	57,890.00	(20,040.69)	65.38%
6003011 · Mech II	5,562.60	47,282.10	72,315.00	(25,032.90)	65.38%
6003012 · Mech I	4,593.04	39,040.84	59,710.00	(20,669.16)	65.38%
6004011 · Fishery Manager	5,077.06	43,155.01	66,005.00	(22,849.99)	65.38%
6004012 · Assistant Fish Hatchery	3,244.68	27,579.78	42,425.00	(14,845.22)	65.01%
6005011 · Mosq. Control Supervisor	18,219.08	154,113.48	236,245.00	(82,131.52)	65.24%
6005012 · MC Tech II	16,083.86	136,712.81	209,095.00	(72,382.19)	65.38%
6005013 · MC Tech I	70,926.76	600,378.88	929,210.00	(328,831.12)	64.61%
6006011 · Board of Trustees	1,386.01	7,490.00	13,200.00	(5,710.00)	56.74%
6007011 · REG EXTRA HELP		26,148.00	50,000.00	(23,852.00)	52.3%
6008010 · Veh/Ret/Perf/Ed/Etc.					
6008011-District Veh	120.00	1,020.00	1,560.00	(540.00)	65.39%
6008012-Ed Incentive	512.78	4,349.03	6,670.00	(2,320.97)	65.2%
Total 6008010 · Veh/Ret/Perf/Ed/Etc.	632.78	5,369.03	8,230.00	(2,860.97)	65.24%
Total 6000000 · EE SALARIES & WAGES	175,483.43	1,509,843.13	2,384,690.00	(874,846.87)	63.31%
6010000 · EMPLOYEE BENEFITS					
601010000-UNEMPLOYMENT INS	-	687.31	15,245.00	(14,557.69)	4.51%
602000000-OTHER-DEF COMP	-	250.00	500.00	(250.00)	50.0%
602000000-RET DIST SHARE	54,922.06	439,179.37	684,370.00	(245,190.63)	64.17%
604000000-LIFE INSURANCE	226.80	1,820.70	2,650.00	(829.30)	68.71%
609100000-A3R Plan125 ERContri	28,443.27	253,488.40	433,010.00	(179,521.60)	58.54%
605000000-HEALTH INSURANCE					
605104 · Sick Leave Bank Payable	1,248.17	9,350.52	35,000.00	(25,649.48)	26.72%
6050101 · Dental	5,419.44	42,664.56	65,295.00	(22,630.44)	65.34%
6050102 · MEDICAL	52,741.54	446,668.23	710,250.00	(263,581.77)	62.89%
6050103 · VISION	770.12	6,264.26	10,180.00	(3,915.74)	61.54%
Total 605000000-HEALTH INSURANCE	60,179.27	504,947.57	820,725.00	(315,777.43)	61.53%
6050000200-OPEB TRUST CONTRI	-	45,504.00	-	45,504.00	100.0%

San Joaquin County Mosquito & Vector Control District  
Budget and Actual Comparison, Expenses  
July 2013 through February 2014

	Feb-14	Jul '13 - Feb 14	Budget	\$ Over Budget	% of Budget
6050000214 EE COMP ABSENCE					
6500214-1 Vacation Payout	-	-	53,740.00	(53,740.00)	0.0%
6050214-2 Sick Leave Payout	-	-	6,215.00	(6,215.00)	0.0%
Total 6050000214 EE COMP ABSENCE	-	-	59,955.00	(59,955.00)	0.0%
6060200000-DISABLE INS	2,315.53	18,547.23	27,460.00	(8,912.77)	67.54%
60300 · OASDI DISTRICT					
6030000000-SS REG EE					
60300-1 VLP SS Tax	-	-	3,718.00	(3,718.00)	0.0%
6030000000-SS REG EE - Other	10,478.80	88,647.07	147,755.00	(59,107.93)	60.0%
Total 6030000000-SS REG EE	10,478.80	88,647.07	151,473.00	(62,825.93)	58.52%
6030100000-MEDICARE REG					
60301-1 VLP Medicare Tax	-	-	872.00	(872.00)	0.0%
6030100000-MEDICARE REG - Other	2,450.71	20,912.12	34,700.00	(13,787.88)	60.27%
Total 6030100000-MEDICARE REG	2,450.71	20,912.12	35,572.00	(14,659.88)	58.79%
6030200000-SS UTILITY	85.93	1,621.18	3,100.00	(1,478.82)	52.3%
6030300000-MEDICAR UTILITY	20.10	379.15	730.00	(350.85)	51.94%
Total 60300 · OASDI DISTRICT	13,035.54	111,559.52	190,875.00	(79,315.48)	58.45%
Total 6010000 · EMPLOYEE BENEFITS	159,122.47	1,375,984.10	2,234,790.00	(858,805.90)	61.57%
620000 · GEN SRVS&SUPPLIES					
6201000 · OFFICE EXPENSE GEN					
6201001 · GEN OFFICE EXPENSES	563.20	5,055.23	10,000.00	(4,944.77)	50.55%
6201003 · SMALL DEVICES NONCAPITAL	97.41	360.05	1,000.00	(639.95)	36.01%
Total 6201000 · OFFICE EXPENSE GEN	660.61	5,415.28	11,000.00	(5,584.72)	49.23%
6206000000-COMMUNICATIONS	2,994.59	15,459.91	21,350.00	(5,890.09)	72.41%
6209000 · MEMBERSHIPS	-	17,720.00	18,300.00	(580.00)	96.83%
6211000 · MAINT-EQUIPMENT	2,809.11	37,336.77	50,000.00	(12,663.23)	74.67%
6211004 · FUEL, LUBE & OIL	1,607.44	62,206.23	122,500.00	(60,293.77)	50.78%
6214000 · RENTS&LEASES-EQUIP	2,289.54	7,945.58	11,000.00	(3,054.42)	72.23%
6217000 · TRANS&TRAVEL					
6217101 · MEALS	881.31	1,896.01	500.00	1,396.01	379.2%
6217102 · MEALS/REFRESHMENT NONCONFERENC	-	439.24	500.00	(60.76)	87.85%
6217202 · CONFERENCE	(130.00)	3,385.00	500.00	2,885.00	677.0%
6217000 · TRANS&TRAVEL - Other	4,522.33	10,277.57	23,500.00	(13,222.43)	43.73%
Total 6217000 · TRANS&TRAVEL	5,273.64	15,997.82	25,000.00	(9,002.18)	63.99%

San Joaquin County Mosquito & Vector Control District  
Budget and Actual Comparison, Expenses  
July 2013 through February 2014

	Feb-14	Jul '13 - Feb 14	Budget	\$ Over Budget	% of Budget
6220001 · AUDITORS PAYROLL&AP		-	3,000.00	(3,000.00)	0.0%
6220095 · AUDTR DIR ASSM SRV		-	12,000.00	(12,000.00)	0.0%
6220195 · 55401- AUDITOR DIR ASSESS CHRGE		17,637.92	18,000.00	(362.08)	97.99%
6220295 · 55402-AUDITOR DIR ASSESS CHRGE		17,637.92	30,000.00	(12,362.08)	58.79%
<b>Total 6220095 · AUDTR DIR ASSM SRV</b>					
6221000 · PROF&SPEC SRVS					
6221001 · LEGAL&ACCTING	1,788.00	35,296.00	65,000.00	(29,704.00)	54.3%
6221002 · CONTR AIRCRAFT	-	307,489.60	510,000.00	(202,510.40)	60.29%
6221003 · OTHERS	-	26,384.57	73,260.00	(46,875.43)	36.02%
<b>Total 6221000 · PROF&amp;SPEC SRVS</b>	<b>1,788.00</b>	<b>369,170.17</b>	<b>648,260.00</b>	<b>(279,089.83)</b>	<b>56.95%</b>
6221012 · TX ADMIN CHRGS		41,629.50	85,000.00	(43,370.50)	48.98%
6221050400-LAB EXP					
622150401 SM LAB EQUIP/FURNTR	590.82	96.78	1,500.00	(1,403.22)	6.45%
6221050400-LAB EXP - Other	590.82	25,416.36	35,000.00	(9,583.64)	72.62%
<b>Total 6221050400-LAB EXP</b>	<b>590.82</b>	<b>25,513.14</b>	<b>36,500.00</b>	<b>(10,986.86)</b>	<b>69.9%</b>
6226001600-PERMITS/LIC'S OTHER	1,463.00	5,618.00	6,700.00	(1,082.00)	83.85%
6226016000-SOFTWARE TECHSUP/LIC	-	9,238.08	19,150.00	(9,911.92)	48.24%
6226601700-COMMUNITY OUTREACH	-	13,063.30	40,000.00	(26,936.70)	32.66%
6226019120-ANIMAL/FISH FEED					
6226019121-Fish	-	1,865.66	7,000.00	(5,134.34)	26.65%
<b>Total 6226019120-ANIMAL/FISH FEED</b>	<b>-</b>	<b>1,865.66</b>	<b>7,000.00</b>	<b>(5,134.34)</b>	<b>26.65%</b>
6226000 · DISTRICT SPEC EXP	8.12	3,054.87	2,500.00	554.87	122.2%
6226013 · TRAINING-ED EXPENSES	-	340.00	2,500.00	(2,160.00)	13.6%
6230000 · INSURANCE					
6232010 · INSURANCE-WORKERS COMP	-	129,083.00	116,620.00	12,463.00	110.69%
6236000 · INSUR-Prop/Fidelity/NOWaircraft	-	80,700.00	82,645.00	(1,945.00)	97.65%
6230000 · INSURANCE - Other	-	-	6,400.00	(6,400.00)	0.0%
<b>Total 6230000 · INSURANCE</b>	<b>-</b>	<b>209,783.00</b>	<b>205,665.00</b>	<b>4,118.00</b>	<b>102.0%</b>
6238000 · MISC EXP					
6238001 · BANK CHARGE	-	1.46	800.00	(798.54)	0.18%
6238002 · CASH SHORT/OVER CASH BOX	-	-	50.00	(50.00)	0.0%
6238000 · MISC EXP - Other	17.36	325.46	1,450.00	(1,124.54)	22.45%
<b>Total 6238000 · MISC EXP</b>	<b>17.36</b>	<b>326.92</b>	<b>2,300.00</b>	<b>(1,973.08)</b>	<b>14.21%</b>

San Joaquin County Mosquito & Vector Control District  
Budget and Actual Comparison, Expenses  
July 2013 through February 2014

	Feb-14	Jul '13 - Feb 14	Budget	\$ Over Budget	% of Budget
6240000 · CLTHIN&PRSNAL SUPP	1,270.44	7,695.56	14,500.00	(6,804.44)	53.07%
6246000 · HOUSEHOLD EXP	-	99.08	600.00	(500.92)	16.51%
6246000101-Haz Mat Dispo	2,002.22	11,133.77	18,000.00	(6,866.23)	61.85%
6246000 · HOUSEHOLD EXP - Other	2,002.22	11,232.85	18,600.00	(7,367.15)	60.39%
<b>Total 6246000 · HOUSEHOLD EXP</b>					
6249000 · UTILITIES	2,765.15	25,963.86	35,000.00	(9,036.14)	74.18%
6252000000-AGRI CHEM	-	7,523.44	15,300.00	(7,776.56)	49.17%
6252000100-FISHERY	5,611.68	597,069.76	1,300,000.00	(702,930.24)	45.93%
6252000000-AGRI CHEM - Other	5,611.68	604,593.20	1,315,300.00	(710,706.80)	45.97%
<b>Total 6252000000-AGRI CHEM</b>					
6260000 · MAINT STRUCT&GROUNDS	655.12	10,763.38	35,000.00	(24,236.62)	30.75%
6264000 · RENT-STRUCT&GROUND	3,880.70	4,398.70	2,600.00	1,798.70	169.18%
6269000 · SM TOOL&INSTRMINT	-	125.48	1,200.00	(1,074.52)	10.46%
<b>Total 620000 · GEN SRVS&amp;SUPPLIES</b>	<b>35,687.54</b>	<b>1,524,095.18</b>	<b>2,769,925.00</b>	<b>(1,245,829.82)</b>	<b>55.02%</b>
<b>Total Expense</b>	<b>370,293.44</b>	<b>4,409,922.41</b>	<b>7,389,405.00</b>	<b>(2,979,482.59)</b>	<b>59.68%</b>
<b>Other Expense</b>					
6300000 · OTHER CHARGES					
6301000 · CONTRI OTHER AGENCY	-	38,160.00	38,160.00	-	100.0%
6301002 · CMVCA RESEARCH FOUNDATION	-	-	600.00	(600.00)	0.0%
6301003 · SJC FARM BUREAU	-	-	1,000.00	(1,000.00)	0.0%
6301004 · OTHERS	-	38,160.00	39,760.00	(1,600.00)	95.98%
<b>Total 6301000 · CONTRI OTHER AGENCY</b>					
6381000 · TXS&ASSMINTS	-	-	100.00	(100.00)	0.0%
<b>Total 6300000 · OTHER CHARGES</b>	<b>-</b>	<b>38,160.00</b>	<b>39,860.00</b>	<b>(1,700.00)</b>	<b>95.74%</b>
6400000 · CAPITAL EXPENSE					
6411000 · STRUCT& IMPROVS					
6411001 · STOCKTON	30,225.00	71,478.00	80,000.00	(8,522.00)	89.35%
6411005 · WHITE SLOUGH	-	13,483.00	18,000.00	(4,517.00)	74.91%
6411006 · LODI	-	-	-	-	0.0%
6411008 · ESCALON	-	25,779.83	250,000.00	(224,220.17)	10.31%
<b>Total 6411000 · STRUCT&amp; IMPROVS</b>	<b>30,225.00</b>	<b>110,740.83</b>	<b>348,000.00</b>	<b>(237,259.17)</b>	<b>31.82%</b>

San Joaquin County Mosquito & Vector Control District  
Budget and Actual Comparison, Expenses  
July 2013 through February 2014

	Feb-14	Jul '13 - Feb 14	Budget	\$ Over Budget	% of Budget
6451000 - EQUIPMENT					
6451001001-SHOP/VEH REPLACEMNT	163.24	3,007.23	52,000.00	(48,992.77)	5.78%
6451001002-SOFTWARES/PROGRMS	-	-	10,000.00	(10,000.00)	0.0%
6451001003-EQUIP/LAB	-	-	20,000.00	(20,000.00)	0.0%
6451001004-EQUIP/FIELD/FISH	-	40,752.39	32,000.00	8,752.39	127.35%
6451001005-EQUIP/OFFICE	-	-	10,000.00	(10,000.00)	0.0%
Total 6451000 - EQUIPMENT	163.24	43,759.62	124,000.00	(80,240.38)	35.29%
Total 6400000 - CAPITAL EXPENSE	30,388.24	154,500.45	472,000.00	(317,499.55)	32.73%
Total Other Expense	30,388.24	192,660.45	511,860.00	(319,199.55)	37.64%
<b>TOTALS</b>	<b>400,681.68</b>	<b>4,602,582.86</b>	<b>7,901,265.00</b>	<b>(3,298,682.14)</b>	<b>58.25%</b>

# San Joaquin County Mosquito & Vector Control District

## Budget and Actual Comparison, Revenues

July 2013 through February 2014

Ordinary Income/Expense	Jul '13 - Feb 14	Budget	\$ Over Budget	% of Budget
<b>Income</b>				
470000000-MISC. REVENUES				
470600101-OUTLAWED WARRANTS	-	-	-	0.0%
470600201-OUTLAWED WAR.DISTRICT	-	-	-	0.0%
4707000000-OTHER MISC REVENUES				
4707000101-SALES CAPITAL ASSETS	74,448.00	5,000.00	69,448.00	1,488.96%
4707000201-SALES NONCAP ASSETS	-	150.00	(150.00)	0.0%
4707000401-CALCARD REBATE	13,125.94	15,000.00	(1,874.06)	87.51%
4707000501-WC DISABILITY	11,055.69	-	11,055.69	100.0%
4707000601-PAYROLL OTHERS	40.00	-	40.00	100.0%
4707000701-TB ABATED	-	-	-	0.0%
4707001010-OTHERS	14,756.06	5,000.00	9,756.06	295.12%
4707001011-MED INSUR REBATES				
470700101104-MIR EE PLAN 125	240,364.29	412,410.00	(172,045.71)	58.28%
470700101103-MIR EE OUTFOCKET	42,454.88	62,575.00	(20,120.12)	67.85%
470700101102-MIR RETIREES	37,153.95	59,312.00	(22,158.05)	62.64%
470700101101-MIR TRUSTEES	5,829.64	8,502.00	(2,672.36)	68.57%
<b>Total 4707001011-MED INSUR REBATES</b>	<b>325,802.76</b>	<b>542,799.00</b>	<b>(216,996.24)</b>	<b>60.02%</b>
<b>Total 4707000000-OTHER MISC REVENUES</b>	<b>439,228.45</b>	<b>567,949.00</b>	<b>(128,720.55)</b>	<b>77.34%</b>
<b>Total 470000000-MISC. REVENUES</b>	<b>439,228.45</b>	<b>567,949.00</b>	<b>(128,720.55)</b>	<b>77.34%</b>
4100000 - PROPERTY TAX				
4101000100-REDEV RESIDU DISTRI	20,955.17	25,390.00	(4,434.83)	82.53%
4100100010-SECURED	1,843,089.87	3,373,405.00	(1,530,315.13)	54.64%
4102070 - SECURED SB813	11,885.55	10,000.00	1,885.55	118.86%
4101000 - UNSECURED	216,968.58	224,620.00	(7,651.42)	96.59%
4101070 - UNSECURED SB813	54.01	-	54.01	100.0%
4101020 - SB813 PRIOR	21.23	-	21.23	100.0%
4101030 - UNSECURED PRIOR	42.17	-	42.17	100.0%
<b>Total 4100000 - PROPERTY TAX</b>	<b>2,093,016.58</b>	<b>3,633,415.00</b>	<b>(1,540,398.42)</b>	<b>57.61%</b>



San Joaquin County Mosquito & Vector Control District  
Budget and Actual Comparison, Revenues  
July 2013 through February 2014

	Jul '13 - Feb 14	Budget	\$ Over Budget	% of Budget
<b>4400000 · INTEREST INCOME</b>				
4401204 · CITIZENS BUS BANK MMKT	6.15	10.00	(3.85)	61.5%
4455401 · GEN FUND	9,334.00	11,480.00	(2,146.00)	81.31%
4455402 · SPEC ASSESSMENTS	874.00	870.00	4.00	100.46%
4455411 · CONTINGENT	1,967.00	2,640.00	(673.00)	74.51%
4455412 · GEN RESERVE	4,175.00	6,610.00	(2,435.00)	63.16%
<b>Total 4400000 · INTEREST INCOME</b>	<b>16,356.15</b>	<b>21,610.00</b>	<b>(5,253.85)</b>	<b>75.69%</b>
<b>4400604 · STATE OTHER IN LIEU TX HWY PROP</b>				
4500000 · AID FRM OTHER GOVT AGENCIES	-	-	-	0.0%
<b>4505110 · STATE IN LIEU TAXES</b>				
4505500 · STATE AID HOMEOWNER PROPTX	26.26	-	26.26	100.0%
4576000 · OTHER GOVT REDEVL P PASS THRU	21,602.90	45,020.00	(23,417.10)	47.99%
<b>Total 4500000 · AID FRM OTHER GOVT AGENCIES</b>	<b>14,293.63</b>	<b>22,530.00</b>	<b>(8,236.37)</b>	<b>63.44%</b>
<b>4605000 · CHARGES FOR SERVICES</b>				
4605116370155401 SPECIAL TAX	35,922.79	67,550.00	(31,627.21)	53.18%
4605116370255402- BEN ASSESSMNT	560,969.89	1,058,075.00	(497,105.11)	53.02%
<b>Total 4605000 · CHARGES FOR SERVICES</b>	<b>947,710.82</b>	<b>1,780,915.00</b>	<b>(833,204.18)</b>	<b>53.22%</b>
<b>Total Income</b>	<b>1,508,680.71</b>	<b>2,838,990.00</b>	<b>(1,330,309.29)</b>	<b>53.14%</b>
<b>Total Income</b>	<b>4,093,204.68</b>	<b>7,129,514.00</b>	<b>(3,036,309.32)</b>	<b>57.41%</b>

San Joaquin County Mosquito & Vector Control District  
Expenses by Vendor Summary  
February 2014

	<u>Feb 14</u>
ACE Hardware	5.94
ACME Saw N Industrial Supply	107.15
Adapco - Fennimore Chemicals	5,611.68
Anza Parking	77.51
Barnes Welding Supply	47.51
Batteries Plus	28.12
Battery Bill, Inc	73.90
Big W Sales	8.35
CalPERS	52,741.54
Capital Rubber Co., Ltd.	37.08
City of Lodi	4,180.66
City of Stockton	196.53
City Parkings	64.00
Clutch & Brake Xchange Inc.	84.33
De Lage Landen Financial Services	213.79
Delta Dental	5,419.44
Delta Industrial Solutions	40.18
Delta Sound & Telephone	168.60
Dollar Tree Stores Inc	17.36
Eley, Christopher K	1,788.00
Fastenal Company	6.52
FedEx	160.48
French Camp Storage	74.00
G&K Services	2,292.93
Grainger	43.58
Hilton Hotel	2,659.99
Huang, Shaoming	49.80
ITSolutions Currie (Currie Computers Inc)	2,267.50
J. Milano Co., Inc.	131.83
Lowe's	107.52
Lucas Business Systems	204.69
Misc. Restaurants	621.02
Modesto PC, First Service Tech	875.83
Mosquito&Vector Control Association of Ca	(130.00)
Nestle Pure Life Direct, Nestle Water	353.04
New Image Sign Co	714.45
Office Depot	406.27
Pacific Gas&Electric Co.	1,601.91
Pentair Aquatic Eco-Systems	91.76
Petty Cash	38.94
Sacramento Int'l Airport	142.00
San Joaquin County Dept. of Public Works	14.45
San Joaquin County EHD	1,463.00
Sheraton	1,467.92
Shuttle Services	91.67
Smart&Final	267.09
Stericycle Inc.	129.41
Stockton Filter Supply Co., Inc.	129.79
Stockton Scavengers Association, Inc	120.40
TelePacific (Arrival Communications)	907.42
The Knox Company	533.67
UC Regents	134.64
United Air	50.00
Unum Life Insurance	2,542.33
Verizon Wireless	2,087.17
Vision Service Plan CA	770.12
Wal Mart	25.92
Zee Medical Co.	232.59
<b>TOTAL</b>	<b><u>94,593.32</u></b>

**SAN JOAQUIN COUNTY MOSQUITO AND VECTOR CONTROL DISTRICT**  
**District Activities Report**

**January / February**

**Work Completed:**

**CONTINUATION OF SWIMMING POOL INSPECTIONS ON PROPERTIES IN FORECLOSURE**

The District continues to work with the County Assessor's office and the County GIS Department to develop a list of properties with swimming pools that are either in default or full foreclosure. 15 pools were identified from the most recent list, up from 5 pools previously.

**FIELD ACTIVITIES**

Field Technicians continued access to mosquito breeding sources through brush removal and herbicide applications. Garlon herbicide treatments were completed in February. In addition to source access work, technicians began treating treehole mosquitoes (*Aedes sierensis*) throughout areas of the county that have traditionally had issues with adult populations. Technicians have also begun inspecting and treating previously unmaintained swimming pools that the District maintains a database on.

**EQUIPMENT MAINTENANCE**

Calibration and cleaning of spray equipment in preparation for the upcoming season was completed between the months of January and February.

**NPDES ANNUAL REPORT**

District staff completed its 2013 National Pollution Discharge Elimination Systems (NPDES) Permit annual report for the State Regional Water Quality Board.

**TOTAL TREATMENT WORK CONDUCTED DURING JANUARY / FEBRUARY**

**GROUND WORK**

68 Acs Larviced  
12 Acs Adulticided  
57 Acs Herbiced

**AERIAL WORK**

0 Acs Larviced  
0 Acs Adulticided

**SERVICE REQUESTS**

17 Mosquitoes

9 Fish Requests

69 Neglected Pools

**WORK SCHEDULED FOR MARCH**

- CONTINUE TO INSPECT NEGLECTED SWIMMING POOLS REPORTED BY THE PUBLIC AND IDENTIFIED ON THE CURRENT HOME FORECLOSURE LIST
- BEGIN INITIAL CEMETERY URN TREATMENTS
- CONTINUE ZONE INSPECTIONS INTERMINTENTLY
- BEGIN ANNUAL PESTICIDE AND SAFETY TRAINING
- TRAIN NEWLY HIRED MOSQUITO CONTROL TECHNICIANS

## **PUBLIC INFORMATION & OUTREACH**

### **MONTH END REPORT**

**For months ending January & February 2014**

To: Ed Lucchesi, Manager

From: Aaron Devencenzi, PIO

#### Monthly Activities

##### **January:**

- Three school presentations were given to five classes with a total of 350 students.
- Attended Ag Venture at the San Joaquin County Fair Grounds. Twenty seven presentations with 607 students, parents, and teachers in attendance.
- I continued working on the 2013 Annual Report as data was provided.
- Worked on the MVCAC poster for Fish Facility Manager.
- Worked on developing new employee safety data binders for safety training.
- I had a meeting with a bill board representative for advertisement.
- Posted information to the District's website.

##### • **February:**

- One school presentations were given with 70 students in attendance.
- Continued working on the safety binders and Annual report.
- Worked Spray Safe with Manager
- Worked with the mechanics on placing the new logo on all District vehicles
- I had the web designer add our new logo to the website. The truck decals and website integration are the first two tasks for phasing in the new decals / logo.
- Picked up safety supplies and office supplies.
- I attended an invasive water species meeting with San Joaquin Board of Supervisors, USDA and UC specialists for the remove of water hyacinth in the Delta.
- I sent a brief letter to the Board of Supervisors to be incorporated with a letter sent to Senator Dianne Feinstein. The letter is to gain a federal grant to revolve invasive weed species in the Delta.

## MANAGER'S REPORT

For the period January 16, through March 12, 2013

- During this period I attended three (3) meetings:
  1. The American Mosquito Control Association Conference (AMCA) held in Seattle, WA. February 2-6, 2014. This was the 80<sup>th</sup> annual meeting of this association, and included attendees from mosquito control programs, academia, industry, the military, health, and regulatory agencies. During the plenary session, Gordon Patterson PhD, *Professor of History, Florida Institute of Technology*, provided a memorial lecture honoring the Founding Mothers: titled "Women, Entomology, and the Origins of the Mosquito Control Movement". He referenced the importance of pioneering females in a male dominated crusade to discover mosquito-borne viruses from the 1890s thru the 1960s. Other subjects included legislative and regulatory affairs, aerial mosquito control, pesticide resistance management, new product trials, and invasion of exotic species such as *Aedes aegypti* (Yellow-fever mosquito) recently found in central California.
  2. The Mosquito and Vector Control Association of California (MVCAC) 82<sup>nd</sup> Annual Conference held in San Diego, CA. February 18-21, 2014. The District's Assistant Manager, Entomologist, Assistant Entomologist, Micro-Biologist and Fish Hatchery Manager were also in attendance. I arrived on the 19<sup>th</sup> due to my commitment to the Spray Safe meeting held the day prior. A full report will be shared during the board meeting.
  3. As chairperson of the San Joaquin County Spray Safe Committee, I served as moderator for the 6<sup>th</sup> annual Spray Safe event held on February 18, 2014 at the Robert J Cabral Agricultural Center. Approximately 250 attendees participated in the event. Susan Talamantes Eggman, (California Assemblymember 13<sup>th</sup> District) Agriculture Committee Chair, provided the "Welcoming Address". Presentations included Implementation of Spray Safe, Best Management Practices, Labor Relations, Laws and Regulations, and Pesticide Transportation.
- I received a public records request on February 11, 2014 from David Renison, President of the San Joaquin Tax Payers Association. The request was for information on behalf of the District Trustees. I provided expense records related to health insurance coverage, stipends, and Trustee travel. A copy of the request is included in your packet. The information provided is on file and available for the Board's review.
- Work continues on filling upcoming staff vacancies that were reported to the Board at the January BOT meeting. The positions will become available March 31<sup>st</sup>, 2014 with the retirement of MCT II Scott Andres, MCT I Fred Mortenson, and MCT I Richard Capuccini. As referenced at our BOT meeting, to ensure a smooth transition of employees through the promotion and transfer exercise, we concluded the promotion and new hire process in advance of the vacancies. The process included written tests, oral interviews, and eventual placement in vacant zones.

For the position of Mosquito Control Technician I, we have hired two individuals and continue the process to hire a third. For the position of MCT II, MCT I Larry Nolin was promoted to replace retiring Scott Andres. The filling of the Office Secretary Position included an initial interview of qualified candidates and plans for a second interview of finalist candidates. These actions are in accord with the District's personnel policy, Policy #2900.
- I contracted with a local asphalt company to complete the last FY improvement project slated for the Stockton yard. The District contracted with Grayson Engineering to complete the extension of the employee parking located on the south west portion of the existing black top area. Over time, fewer employees are ride sharing due to turn over of former employees thus requiring the expansion. This extension will allow for sufficient parking for the entire staff assigned to the Stockton Office. The new area includes five additional parking spaces. This work was budgeted as part of the 2013/14 Capital Expense Account 6411001- Structural & Improvements – Stockton Yard (\$80,000). This improvement was completed for \$30,225.00. This next fiscal year, with Board approval, I'd like to investigate the installation of a carport / solar power structure over this existing employee parking area.

# Board Meeting Information

**To:** Board of Trustees  
**From:** Eddie Lucchesi, Manager  
**CC:** Chris Eley, Legal Counsel  
**Date:** 3/11/2014  
**Re:** March 2014 BOT Meeting, Agenda Item 3f

---

3f. **Correspondence Information**

1. Letter from City of Lodi notifying District of the Re-appointment of Trustee Jack Fiori
2. Public Information Request from San Joaquin County Taxpayers Association

Attachments

CITY COUNCIL

PHIL KATZAKIAN, Mayor  
LARRY D. HANSEN,  
Mayor Pro Tempore  
BOB JOHNSON  
JOANNE MOUNCE  
ALAN NAKANISHI

# CITY OF LODI

CITY HALL, 221 WEST PINE STREET  
P.O. BOX 3006  
LODI, CALIFORNIA 95241-1910  
(209) 333-6702 / FAX (209) 333-6807  
[www.lodi.gov](http://www.lodi.gov)    [cityclerk@lodi.gov](mailto:cityclerk@lodi.gov)

KONRADT BARTLAM  
City Manager  
RANDI JOHL-OLSON  
City Clerk  
D. STEPHEN SCHWABAUER  
City Attorney

January 22, 2014

San Joaquin County Mosquito  
& Vector Control District  
7759 South Airport Way  
Stockton, CA 95206-3918

To Whom It May Concern:

At the regular Lodi City Council Meeting of January 15, 2014, the City Council concurred with the Mayor's recommendation to reappoint Jack Fiori as a member of the Board of Trustees of the San Joaquin County Mosquito and Vector Control District. Mr. Fiori's appointment is to serve a four-year term which will expire on December 31, 2017.

Thank you for your recent letter to the City of Lodi supporting Mr. Fiori's continued representation of the City of Lodi.

Please feel free to contact my office should you have any questions or require our assistance with regarding to this appointment.

Sincerely,

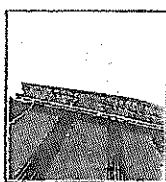


Randi Johl-Olson  
City Clerk

RJO/JMR

cc: Jack Fiori





SAN JOAQUIN  
TAXPAYER'S  
ASSOCIATION

Feb. 11, 2014

Mr. Ed Lucchesi, Manager  
Mosquito Abatement & Vector Control District of San Joaquin County  
7759 S. Airport Way  
Stockton CA 95206

Subject: Trustee Remuneration

Dear Mr. Lucchesi:

Pursuant to the California Public Records Act (Government Code Section 6250 et seq.) we respectfully request an itemized record of district funds paid to or on behalf of the Trustees of the Board, from June 1, 2012 to date.

Please provide all expense records, including but not limited to salaries, stipends, health and welfare benefits and travel expenses (dates and purpose of travel).

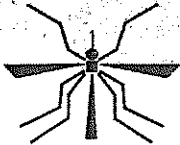
We are asking for a detailed account of the dates, payments and reimbursements paid on behalf of each trustee, respectively.

Thank you for your time and attention to this matter. Please contact me at (209) 608-7693 or via e-mail at: [davidrenison@cs.com](mailto:davidrenison@cs.com) with any questions you may have.

Sincerely,

David Renison  
SJTA President, on behalf of the SJTA Board of Directors

**SAN JOAQUIN  
COUNTY**



**MOSQUITO &  
VECTOR CONTROL  
DISTRICT**

**BOARD OF TRUSTEES**

MARC WARMERDAM  
PRESIDENT

SAN JOAQUIN COUNTY

GARY LAMBDIN  
VICE PRESIDENT  
CITY OF STOCKTON

JOY MEEKER  
SECRETARY  
CITY OF ESCALON

CITY OF LATHROP  
OMAR KHWEISS

CITY OF LODI  
JACK V. FIORI

CITY OF MANTECA  
JACK SNYDER

CITY OF RIPON  
FRANCIS GROEN

CITY OF TRACY  
CHET MILLER

SAN JOAQUIN COUNTY  
JAY COLOMBINI

SAN JOAQUIN COUNTY  
MIKE MANNA

SAN JOAQUIN COUNTY  
GREG O'LEARY

LEGAL ADVISOR  
CHRISTOPHER K. ELEY

February 26, 2014

COPY

Mr. David Renison  
SJTA President  
P.O. Box 690413  
Stockton, CA 95269-0413

Re: Requested Trustee Remuneration

Dear Mr. Renison,

I am in receipt of your request for information relative to expense records, stipends, health and welfare benefits and travel expenses on behalf of the San Joaquin County Mosquito and Vector Control District Board of Trustees.

As stated previously via e-mail, the information provided is for calendar year 2013:

- 1) **Trustee Health Insurance Information.**
- 2) **Monthly Stipend Information.**
- 3) **Travel Expenses, Dates, and Purpose of Travel.**

Please do not hesitate to contact me at 209-982-4675 if you have any questions or require additional information.

Sincerely,

  
Eddie Lucchesi

Manager

Cc: Chris Eley, District Legal Counsel  
San Joaquin County Mosquito and Vector Control District Board of  
Trustees

# Board Meeting Information

**To:** Board of Trustees  
**From:** Eddie Lucchesi, Manager  
**CC:** Chris Eley, Legal Counsel  
**Date:** 3/11/2014  
**Re:** March 2014 BOT Meeting, Agenda Item 4

---

## 4. MOSQUITO AND VECTOR CONTROL ASSOCIATION OF CALIFORNIA (MVCAC)

### a. Report of MVCAC Annual Conference, February 18 - 21, 2014.

Trustees Manna, Miller, and Groen, along with staff members Huang, Lucchesi, Smith, Fritz, De La Vega, and Vignolo; attended the annual conference of the Mosquito and Vector Control Association of California in San Diego, CA, February 18-21, 2014.

Conference attendees will provide either an oral or a written report re: their attendance at this meeting.

### b. MVCAC Annual Conference Presentations from District Staff.

For the benefit of Trustees unable to attend the conference, District Staff members Huang, Smith, and De La Vega will share their presentations provided at the State Conference. In addition, John Vignolo's Poster Presentation will be displayed in the conference room. The presentations include:

Entomologist Huang – Field Populations of *Culex pipien* Mosquitoes under Pyrethrin+PBO Selection / Resistance

Assistant Entomologist Smith – Reflecting on the Murky Waters of the NPDES

Micro-Biologist De La Vega – Larvicidal Activities of Coffee and Caffeine Solutions against *Culex pipiens*.

Poster Presentation – Mosquito Fish Stocking Rates for Mosquito Breeding Sites & Restocking Rates for District Fish Rearing Ponds

### c. Request for authorization to attend MVCAC Spring Quarterly Meeting, April 30 – May 2, 2014.

The Spring Board of Directors meeting of the Mosquito and Vector Control Association of California (MVCAC) is scheduled for April 30 – May 2, 2014, in Santa Rosa, CA

It is requested that the Manager, Assistant Manager, Entomologist, Public Information Officer, and interested trustees be authorized to attend these meetings.

This item requires Board action.

Attachments

# **Board Meeting Information**

**To:** Board of Trustees  
**From:** Eddie Lucchesi, Manager  
**CC:** Chris Eley, Legal Counsel  
**Date:** 3/11/2014  
**Re:** March 2014 BOT Meeting, Agenda Item 5

---

## **5. 2013 ANNUAL STATEMENT OF ECONOMIC INTERESTS (FORM 700) FILINGS**

Please find attached information from the San Joaquin County Registrar of Voters re: the 2012 / 2013 Annual Statements of Economic Interest (Form 700) filings.

These forms need to be filled out by all trustees and designated employees and contractors for the year 2013.

Staff will prepare forms for trustee signatures and make the forms available at the BOT meeting.

This item requires Board action.

Attachment

**POLICY TITLE: Conflict of Interest**  
**POLICY NUMBER: 1020**

**1020.10** The Political Reform Act, Government Code §81000, et seq., requires state and local government agencies to adopt and promulgate conflict of interest codes. The Fair Political Practices Commission has adopted a regulation, 2 Cal. Code of Regs. §18730, which contains the terms of a standard conflict of interest code. It can be incorporated by reference and may be amended by the Fair Political Practices Commission after public notice and hearings to conform to amendments in the Political Reform Act. Therefore, the terms of 2 Cal. Code of Regs. §18730 and any amendments to it duly adopted by the Fair Political Practices Commission are hereby incorporated by reference and, along with the attached Appendix A in which members of the Board of Trustees and employees are designated, and in which disclosure categories are set forth, constitute the conflict of interest code of the San Joaquin County Mosquito and Vector Control District.

**1020.20** Designated employees shall file statements of economic interests with the Clerk of the County of San Joaquin.

# **Board Meeting Information**

**To:** Board of Trustees  
**From:** Eddie Lucchesi, Manager  
**CC:** Chris Eley, Legal Counsel  
**Date:** 3/11/2014  
**Re:** March 2014, BOT Meeting, Agenda Item 6

---

**6. RESOLUTION (DRAFT) OF THE BOARD OF TRUSTEES OF THE SAN JOAQUIN COUNTY  
MOSQUITO AND VECTOR CONTROL DISTRICT DIRECTING PREPARATION OF THE  
ENGINEER'S REPORT FOR FISCAL YEAR 2014-15 FOR THE SAN JOAQUIN COUNTY  
MOSQUITO, VECTOR AND DISEASE CONTROL ASSESSMENT**

Attached is a proposed resolution that directs the preparation of the engineer's report for the District's 2014-15 benefit assessment.

SCI, the District's consultant and engineer of record for the benefit assessment will create the report and establish the benefit assessment process as agreed to in the current contract between the District and SCI.

It is recommended that the Board adopt draft resolution 13/14-07 (draft) as presented.

This item requires Board action.

Attachment

**RESOLUTION 13/14- 07**

**A RESOLUTION OF THE BOARD OF TRUSTEES OF THE  
SAN JOAQUIN COUNTY MOSQUITO AND VECTOR CONTROL DISTRICT  
DIRECTING PREPARATION OF THE ENGINEER'S REPORT  
FOR THE CONTINUATION OF THE ASSESSMENTS FOR FISCAL YEAR 2014/15  
FOR THE SAN JOAQUIN COUNTY MOSQUITO, VECTOR AND DISEASE CONTROL  
ASSESSMENT**

**RESOLVED**, by the Board of Trustees (the "Board") of San Joaquin County Mosquito and Vector Control District (the "District"), County of San Joaquin, and State of California;

**WHEREAS**, on November 15, 2005 by its Resolution No. 05/06-5, this Board authorized the levy of assessments for the San Joaquin County Mosquito, Vector and Disease Control Assessment (the "Assessment") pursuant to the provisions of the Health and Safety Code Section 2080 et seq. and Article XIID of the California Constitution; and

**WHEREAS**, such mosquito and vector control services provide tangible health benefits, reduced nuisance benefits and other special benefits to the public and properties within the areas of such services; and

**WHEREAS**, the District provides vector control services which includes a system of public projects, programs, public improvements and services intended to provide for the surveillance, prevention, abatement and control of vectors throughout its boundaries (collectively "Services").

**NOW, THEREFORE, BE IT RESOLVED**, that SCI Consulting Group., is hereby designated as Engineer of Work for purposes of these proceedings and is hereby ordered to prepare an Engineer's Report in accordance with the provisions of the Health and Safety Code Section 2080 et seq. and Article XIID of the California Constitution. Upon completion, the Engineer shall file the Report with the Secretary of the Board of Trustees for submission to the Board.

PASSED AND ADOPTED this 17<sup>th</sup> day of March, 2014 by the following vote, to wit:

AYES: \_\_\_\_\_

NOES: \_\_\_\_\_

ABSENT: \_\_\_\_\_

ABSTAIN: \_\_\_\_\_

\_\_\_\_\_  
Mark Warmerdam, President

\_\_\_\_\_  
Date

\_\_\_\_\_  
Joy Meeker, Secretary

# Board Meeting Information

**To:** Board of Trustees  
**From:** Eddie Lucchesi, Manager  
**CC:** Chris Eley, Legal Counsel  
**Date:** 3/10/2014  
**Re:** March 2014 BOT Meeting, Agenda Item

---

## **7. AUTHORIZATION TO PURSUE SALE OF SURPLUS DISTRICT PROPERTY**

Board to consider the sale of District Property located at 200 N. Beckman Road, Lodi, CA

The District's Lodi property located at 200 N. Beckman Road (APN 049-050-31), remains vacant, and has been for approximately six (6) years. Today, District staff maintains the Beckman Rd. facility by ensuring garbage is picked up, signage is removed from the fencing, and weeds are removed or sprayed on a monthly basis. The cost of periodic clean up of trash and weeds (District labor), and city of Lodi required utilities (electric, water, sewer, garbage) average \$205 per month or \$2,460 per year.

The site was declared surplus by the Board at their September 2002 regular BOT meeting. Since then, the District's Board has authorized sale of the property three times that included November, 2002 (Phase III Remediation Project postponed sale); April, 2005 (White Slough office construction interfered with scheduled sale); and October, 2007 (Minimum Bid not met). After the attempt in 2007, the Board decided to withdraw any further plans to sell the property due to decreased property values. In addition, the District investigated the opportunity to lease the property in 2010 and most recently 2013.

As with the process in selling the Escalon Airstrip, before selling the property, the District must comply with several requirements that include offering the property first to local governments, such as cities and the County, as set forth in California Government Code Sections 54220 and 65402. These regulations provide for a 60 – day notice to local governments, allowing them to consider the property for parks, recreation, and low and moderate income housing before the District proceeds with selling the land on the open market.

It is recommended the Board approves staff to investigate a sale and to procure an up-to-date appraisal of the property.

This item requires Board action.

Attachments



# Board Meeting Information

**To:** Board of Trustees  
**From:** Eddie Lucchesi, Manager  
**CC:** Chris Eley, Legal Counsel  
**Date:** 3/11/2014  
**Re:** March 2014 BOT Meeting, Agenda Item 8

---

## **8. REVIEW AND DISCUSSION OF TRUSTEE HEALTH INSURANCE COVERAGE**

The Board of Trustees, at the November 2013 regular meeting, directed staff to agendize Trustee Health Insurance coverage for discussion after the first of the year. The Board will have an opportunity to discuss the aspects of the current Health Insurance plan and provide input as to the future of the plan as it relates to Trustee coverage.

As a review, the Board authorized members of the Board of Trustees to participate in the District's employee health plan - **Resolution 08/09-5** (Attached), at the March 17, 2009 BOT meeting with costs of the benefit to be included in the 2009/10 budget year and implemented on August 1, 2009.

Currently,

- The District will pay up to 100% of the lowest priced HMO Premium for an Employee / Trustee who selects employee only coverage. The Employee / Trustee shall pay the difference of any higher premium plan selected.
- The District will pay up to 92% of the lowest priced HMO Premium for an Employee / Trustee who selects the Employee / Trustee + family coverage. The Employee / Trustee shall pay the difference of any higher premium plan selected.

Following discussion, The Board should determine whether to continue Trustee Health Coverage as currently constituted.

This item may require Board action.

# Board Meeting Information

**To:** Board of Trustees  
**From:** Eddie Lucchesi, Manager  
**CC:** Chris Eley, Legal Counsel  
**Date:** 3/11/2014  
**Re:** March 2014 BOT Meeting, Agenda Item 9

---

## **9. SPECIAL DISTRICT REPRESENTATION ON THE SAN JOAQUIN LOCAL AGENCY FORMATION COMMISSION (LAFCo)**

The District (Board) received a letter of invitation from the San Joaquin Local Agency Formation Commission (LAFCo) to its regular Commission meeting to be held on April 18, 2014. The purpose of this invitation is to allow special districts an opportunity to express their interest in being represented on the LAFCo Commission.

As referenced in the letter, the purpose of LAFCo is to discourage urban sprawl, preserve open-space and prime agricultural lands, to ensure the efficiency of providing government services, and encouraging the orderly formation and development of local agencies based upon local conditions and circumstances.

The process to include special district representation will be explained at the April 18, 2014 Commission meeting. In order for the April meeting to be constructive, LAFCo needs to know the degree of interest from the special districts in the County.

Should independent special district representation be added to the LAFCo Commission, then the independent special districts shall each provide a 1/3 share of the Commission's operational costs.

The Board will be asked to take a position on the level of interest for District representation on the LAFCo commission.

This item requires Board action.

Attachments

# **Board Meeting Information**

**To:** Board of Trustees  
**From:** Eddie Lucchesi, Manager  
**CC:** Chris Eley, Legal Counsel  
**Date:** 3/11/2014  
**Re:** March, 2014 BOT Meeting, Agenda Item 10.

---

10. **CLOSED SESSION (Pursuant to CGC §54956.9)**  
**CONFERENCE WITH LEGAL COUNSEL – ANTICIPATED LITIGATION**  
Significant exposure to litigation pursuant to subdivision (b) of Sec. 54956.9  
(1 Potential Case)

**REPORT OF CLOSED SESSION**

This will be a closed session for the purpose of discussing anticipated litigation.

Following the closed session, a person designated by the Board of Trustees will provide a report of closed session. Any action resulting from the discussions in closed session must be taken in open session.