

13066
PROPERTY NUMBER

INSPECTION - TREATMENT RECORD SAN JOAQUIN COUNTY MOSQUITO ABATEMENT DISTRICT
 OWNER: LINDEN WATER District ADDRESS: PO Box 595 Linden 95236
 LESSEE: ADDRESS: SOURCE TYPE 102
 SPECIFIC LOCATION:
 ADDITIONAL PROPERTY INFORMATION: Flood Rd. 1/8 mi S/Hwy 26 Take laneto cyclone fence

ZONE T R S
 07 2N 8E 14 001
 105-180-06

INSPECTION		TREATMENT										Emp. #	Intl.			
Date	Source #	Source Type	Genus + Instar	Activity	Pesticide	Quantity Used			Area		No. Treated			Treatment Time	Misc. Remarks	
						Gals.	Lbs.	Oz.	Ea.	Acres	Sq. ft.					
8-23	4	102	♂												305	
8-23	2	102	♀												305	
8-23	5	102	♀												305	
8-23	3	102	♀												305	
8-29	4	102	♂												305	
8-29	2	102	♂												305	
8-29	3	102	♂												305	
9-29	3	102	♂												305	
9-29	2	102	♂												305	
9-29	4	102	♂												305	
10-4	2	102	♂												305	
10-4	3	102	♂												305	
10-4	4	102	♂												305	
10-4	5	102	♂												305	
10-13	2	102	♂												305	
10-13	3	102	♂												305	
10-13	4	102	♂												305	
10-13	5	102	♂												305	
10-26	3	102	♂												305	
10-26	4	102	♂												305	
10-26	5	102	♂												305	
11-6	4	102	♂												305	
11-6	5	102	♂												305	
11-6	5	102	♂												305	

John said he would get rid of weeds



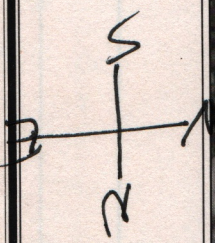
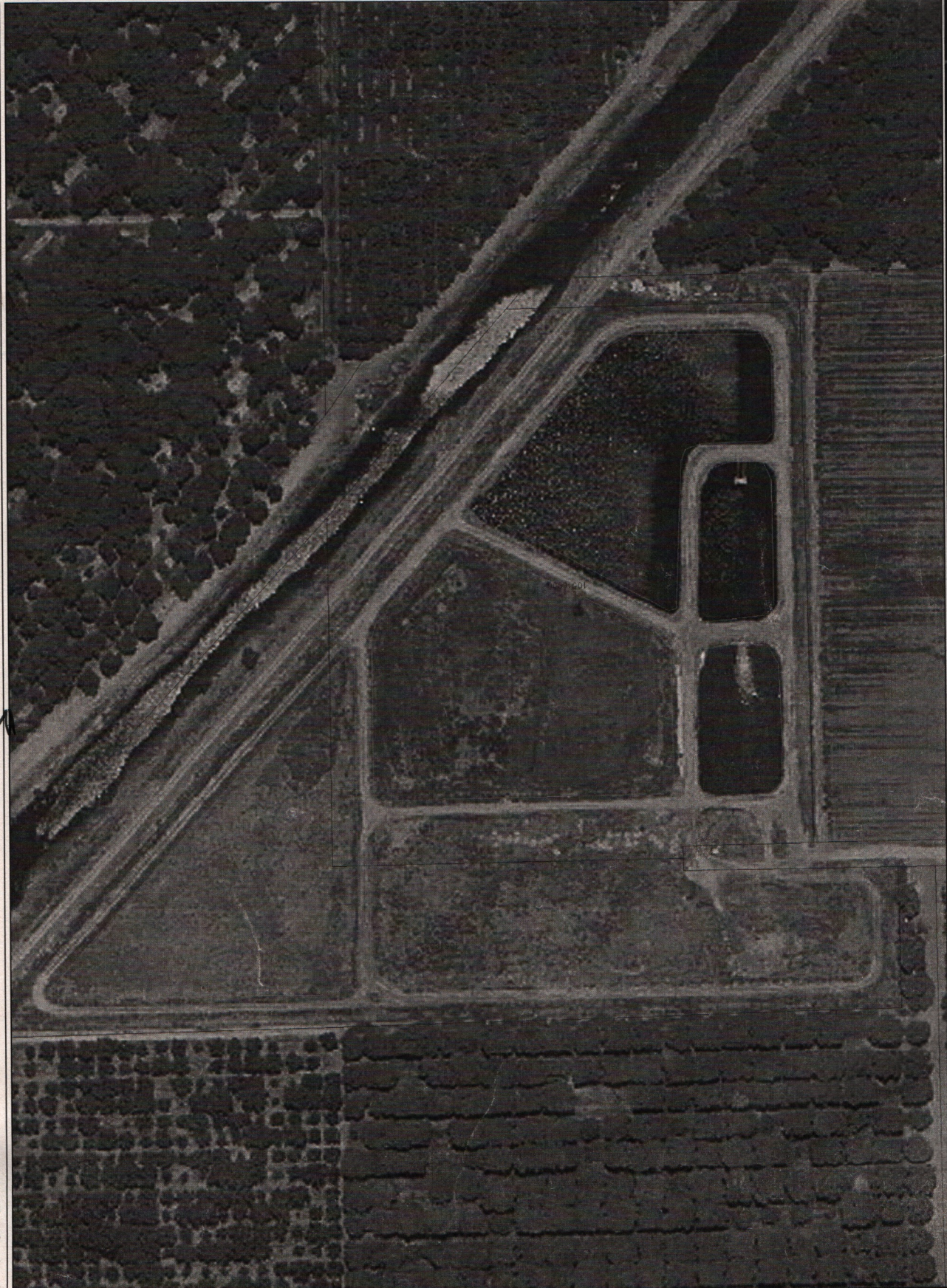
Planning Counter (MDI) - 6/11/2007 3:11:33 PM

San Joaquin County Geographic Information Systems
1810 East Hazelton Avenue, Stockton, CA 95205

The information on this map is based on the most current information available to San Joaquin County Geographic Information Systems.
The County of San Joaquin does not warrant the accuracy or suitability for any particular purpose.
The information on this map is not intended to replace engineering, financial or primary records research.



1" = 190'
(approximate)



- Street Annotation
TI Text
- County Limit
□ County Limit
- Water Lines
/ Water Lines
- Water Polys
□ Water Polys
- Parcels
TI Text
□ Parcels
- 2006 Jun 1 Color